



TOURIST ACCOMMODATION AUSTRALIA

EMBARGO: 11:30AM (CANBERRA TIME) FRI 21 MAR 2003

DECEMBER QTR KEY FIGURES

LICENSED HOTELS	Dec Qtr 2001	Dec Qtr 2002	change
Rooms available (no.)	78 574	77 516	-1.3 %
Room nights occupied ('000)	4 437.3	4 769.8	7.5 %
Room occupancy rate (%)	61.5	67.2	5.7 pts
Takings from accommodation (\$'000)	611 507	668 532	9.3 %
Takings per room night occupied (\$)	137.8	140.2	2.4 \$

MOTELS AND GUEST HOUSES

Rooms available (no.)	84 430	83 565	-1.0 %
Room nights occupied ('000)	4 055.1	4 172.9	2.9 %
Room occupancy rate (%)	52.2	54.3	2.1 pts
Takings from accommodation (\$'000)	355 294	376 270	5.9 %
Takings per room night occupied (\$)	87.6	90.2	2.6 \$

SERVICED APARTMENTS

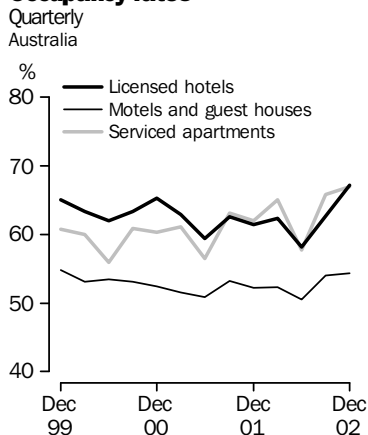
Rooms available (no.)	35 129	35 350	0.6 %
Room nights occupied ('000)	2 003.4	2 175.3	8.6 %
Room occupancy rate (%)	62.0	66.9	4.9 pts
Takings from accommodation (\$'000)	242 753	269 252	10.9 %
Takings per room night occupied (\$)	121.2	123.8	2.6 \$

DECEMBER QTR KEY POINTS

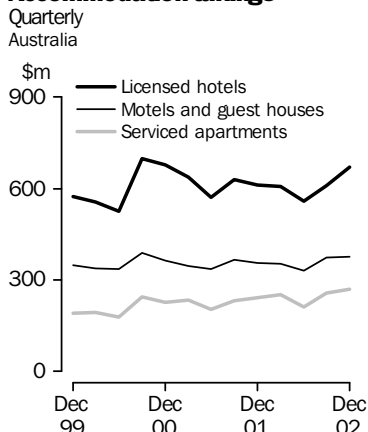
ACCOMMODATION INDICATORS SHOW GENERAL INCREASES

- In the December quarter 2002, total accommodation takings for hotels, motels and guest houses and serviced apartments combined recorded their highest level since the September quarter 2000. Total takings were \$1,314 million, an increase of 8.6% over the same quarter in the previous year. The hotel sector contributed 55% to the increase in total accommodation takings.
- Room occupancy rates were 61.7% in the December quarter 2002. This is an increase of 4.1 percentage points compared with the December quarter 2001. For the first time since the September quarter 1999, the occupancy rate for hotels, motels and guest houses and serviced apartments combined was above 60%.
- The number of room nights occupied during the December quarter 2002 was 11.1 million, an increase of 5.9% over the same quarter in 2001. Total capacity was the only indicator to record a decrease, with the total number of guest rooms available down 0.9% in the December quarter 2002 compared with the December quarter 2001.
- All states and territories recorded an increase in total accommodation takings and total room nights occupied for hotels, motels and guest houses and serviced apartments combined.

Occupancy rates



Accommodation takings



- For further information about these and related statistics, contact the National Information and Referral Service on 1300 135 070 or Neil McKellar-Stewart on Brisbane 07 3222 6364.

NOTE!
Revised data for
September quarter 2002.
See 'Data Revision'
note on page 2.

NOTES

FORTHCOMING ISSUES

<i>ISSUE</i>	<i>RELEASE DATE</i>
March Quarter 2003	20 June 2003
June Quarter 2003	19 September 2003

INTRODUCTION

This publication contains the results of the quarterly Survey of Tourist Accommodation (STA). The STA includes hotels, motels, guest houses and serviced apartments with 15 or more rooms.

NEXT ISSUE

For the four quarters of 2003, the scope of the STA will be expanded. Over this period the following accommodation sectors will be covered:

- hotels, motels, guest houses and serviced apartments with 15 or more rooms;
- holiday flats, units and houses operated by owners, managers or real estate agents who have sole letting rights to at least 15 flats, units or houses for short term letting;
- caravan parks with 40 or more powered sites, cabins, etc; and
- visitor hostels with 25 or more bed spaces.

Extra tables will be presented in *Tourist Accommodation Australia* (cat. no. 8635.0) for the four quarters of 2003 to allow for the inclusion of data on these additional sectors.

Beginning with the March quarter 2003 publication, trend and seasonally adjusted data will be included in *Tourist Accommodation Australia* (cat. no. 8635.0). Trend and seasonally adjusted data was previously published in *Tourism Indicators Australia* (cat. no. 8634.0).

The format and presentation of this publication, including the front page, will change due to the inclusion of expanded scope data and trend and seasonally adjusted estimates.

DATA REVISIONS

Revisions have been made to the September quarter 2002 data in Table 1. Revision tables 18 to 22 are included on pages 34 to 42 of this publication. These provide revisions to Australia, New South Wales, Tasmania and the Australian Capital Territory data for motels and guest houses and serviced apartments for the September quarter 2002.

SYMBOLS AND OTHER USAGES

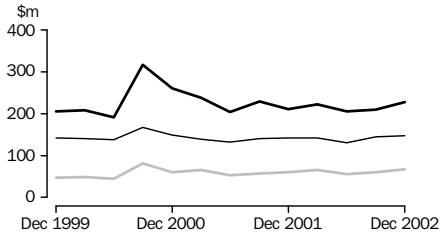
n.a.	not available
n.p.	not available for publication but included in totals where applicable
pts	percentage points change
r	revised
..	not applicable
—	nil or rounded to zero

Dennis Trewin
Australian Statistician

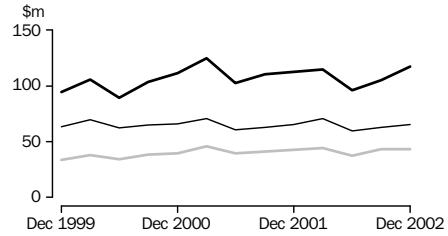
ACCOMMODATION TAKINGS

Licensed hotels
 Motels and guest houses
 Serviced apartments

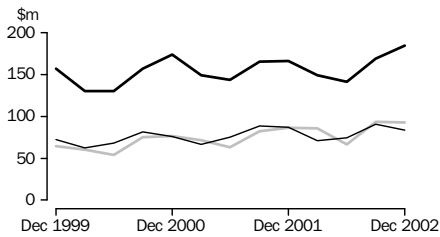
NEW SOUTH WALES



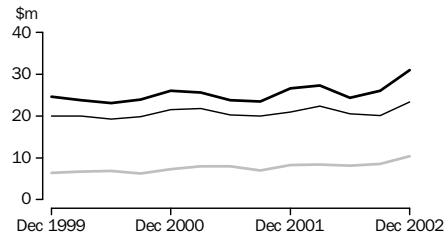
VICTORIA



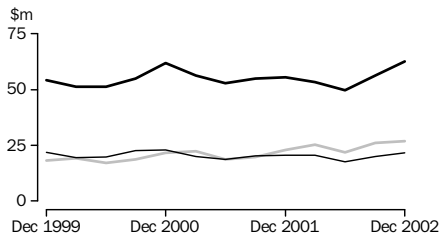
QUEENSLAND



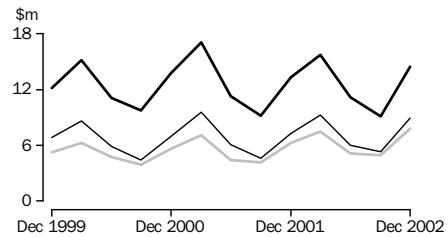
SOUTH AUSTRALIA



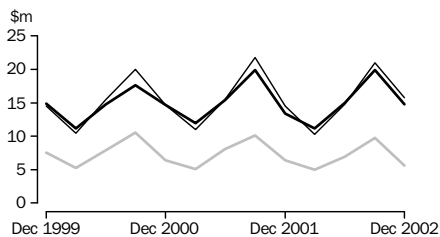
WESTERN AUSTRALIA



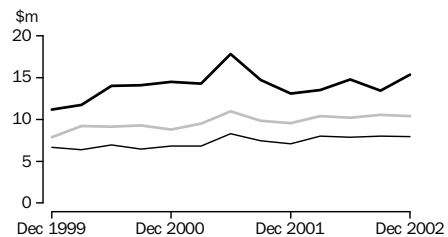
TASMANIA



NORTHERN TERRITORY



AUSTRALIAN CAPITAL TERRITORY



LIST OF TABLES

Page

1	Summary of hotels, motels, guest houses and serviced apartments	5
	Hotels, motels, guest houses and serviced apartments, by star grading	
2	Australia	6
3	New South Wales	8
4	Victoria	10
5	Queensland	12
6	South Australia	14
7	Western Australia	16
8	Tasmania	18
9	Northern Territory	20
10	Australian Capital Territory	22
	Hotels, motels, guest houses and serviced apartments, by tourism region	
11	New South Wales	24
12	Victoria	26
13	Queensland	28
14	South Australia	30
15	Western Australia	31
16	Tasmania	32
17	Northern Territory and Australian Capital Territory	33
	DATA REVISED FOR SEPTEMBER QUARTER 2002	
18	Hotels, motels, guest houses and serviced apartments, by star grading—Australia	34
19	Hotels, motels, guest houses and serviced apartments, by star grading—New South Wales	36
20	Hotels, motels, guest houses and serviced apartments, by star grading—Tasmania	38
21	Hotels, motels, guest houses and serviced apartments, by star grading—Australian Capital Territory	40
22	Hotels, motels, guest houses and serviced apartments, by selected tourism regions	42

1

SUMMARY OF HOTELS, MOTELS, GUEST HOUSES AND SERVICED APARTMENTS (a)—Australia

Period	Establish- ments no.	Guest rooms no.	Bed spaces no.	Persons employed no.	Room nights occupied '000	Room occupancy rate %	Guest nights '000	Bed occupancy rate %	Guest arrivals '000	Average length of stay days	Takings from accom- modation \$'000
LICENSED HOTELS WITH FACILITIES											
2001											
September quarter	776	78 241	205 546	71 620	4 506.3	62.6	7 509	39.7	3 175	2.4	628 608
December quarter	781	78 574	206 592	70 663	4 437.3	61.5	7 426	39.1	3 139	2.4	611 507
2002											
March quarter	781	78 163	203 474	69 888	4 390.4	62.4	7 355	40.2	3 094	2.4	607 768
June quarter	776	78 183	204 368	69 872	4 138.3	58.2	6 657	35.8	2 957	2.3	557 622
September quarter	780	77 603	203 531	69 923	4 469.9	62.7	7 439	39.8	3 218	2.3	609 027
December quarter	777	77 516	203 238	69 699	4 769.8	67.2	7 987	42.9	3 417	2.3	668 532
Year ended December 2001	17 542.5	61.6	29 082	38.8	12 333	2.4	2 446 909
Year ended December 2002	17 768.4	62.6	29 437	39.7	12 685	2.3	2 442 948
MOTELS AND GUEST HOUSES WITH FACILITIES											
2001											
September quarter	2 394	84 021	246 834	29 740	4 112.6	53.2	7 313	32.2	4 076	1.8	365 585
December quarter	2 400	84 430	247 776	29 288	4 055.1	52.2	7 187	31.6	4 079	1.8	355 294
2002											
March quarter	2 401	84 284	246 608	29 123	3 967.8	52.3	7 158	32.3	3 942	1.8	354 023
June quarter	2 382	83 558	244 723	28 733	3 843.0	50.5	6 594	29.6	3 760	1.8	331 210
September quarter	r 2 388	r 83 592	r 244 527	r 29 459	r 4 152.8	r 54.0	r 7 311	r 32.5	r 4 143	r 1.8	r 371 657
December quarter	2 382	83 565	244 156	29 471	4 172.9	54.3	7 402	33.0	4 169	1.8	376 270
Year ended December 2001	15 968.8	52.0	28 227	31.2	15 799	1.8	1 403 441
Year ended December 2002	16 136.5	52.8	28 466	31.8	16 013	1.8	1 433 159
SERVICED APARTMENTS											
2001											
September quarter	646	34 467	114 391	11 459	2 000.1	63.1	4 361	41.4	1 175	3.7	232 329
December quarter	657	35 129	117 192	11 799	2 003.4	62.0	4 498	41.7	1 225	3.7	242 753
2002											
March quarter	668	35 412	117 872	11 808	2 070.2	65.0	4 659	44.0	1 248	3.7	252 201
June quarter	668	35 113	116 329	11 565	1 842.4	57.7	3 854	36.4	1 120	3.4	211 243
September quarter	r 675	r 35 610	r 117 523	r 12 141	r 2 155.7	r 65.9	r 4 674	r 43.3	r 1 258	r 3.7	r 256 186
December quarter	675	35 350	116 385	12 430	2 175.3	66.9	4 804	44.9	1 309	3.7	269 252
Year ended December 2001	7 664.9	60.7	16 793	39.9	4 613	3.6	915 171
Year ended December 2002	8 243.6	63.9	17 990	42.2	4 934	3.6	988 881
TOTAL ESTABLISHMENTS											
2001											
September quarter	3 816	196 729	566 771	112 819	10 619.0	58.7	19 182	36.8	8 427	2.3	1 226 522
December quarter	3 838	198 133	571 560	111 750	10 495.8	57.6	19 111	36.4	8 444	2.3	1 209 554
2002											
March quarter	3 850	197 859	567 954	110 819	10 428.4	58.6	19 171	37.5	8 283	2.3	1 213 991
June quarter	3 826	196 854	565 420	110 170	9 823.7	54.8	17 105	33.2	7 836	2.2	1 100 074
September quarter	r 3 843	r 196 805	r 565 581	r 111 523	r 10 778.4	r 59.6	r 19 424	r 37.4	r 8 619	r 2.3	r 1 236 869
December quarter	3 834	196 431	563 779	111 600	11 118.0	61.7	20 193	39.0	8 894	2.3	1 314 053
Year ended December 2001	41 176.2	57.3	74 103	35.7	32 745	2.3	4 765 521
Year ended December 2002	42 148.5	58.7	75 893	36.8	33 632	2.3	4 864 989

(a) Comprising establishments with 15 or more rooms or units. See Explanatory Notes, paragraph 7.

STAR GRADING

Period	Licensed	Motels	Serviced	STAR GRADING					Ungraded	Total
	hotels with facilities	and guest houses	apartments	1	2	3	4	5		
ESTABLISHMENTS, CAPACITY AND EMPLOYMENT (number)										
December quarter 2001										
Establishments	781	2 400	657	66	458	1 868	936	103	407	3 838
Guest rooms	78 574	84 430	35 129	2 299	13 513	71 203	72 889	24 125	14 104	198 133
Bed spaces	206 592	247 776	117 192	7 246	39 864	210 723	210 644	61 525	41 558	571 560
Persons employed	70 663	29 288	11 799	778	5 414	26 696	38 396	34 665	5 801	111 750
December quarter 2002										
Establishments	777	2 382	675	63	446	1 845	952	110	418	3 834
Guest rooms	77 516	83 565	35 350	2 238	13 231	69 161	72 764	24 505	14 532	196 431
Bed spaces	203 238	244 156	116 385	7 077	38 727	203 525	208 337	63 764	42 349	563 779
Persons employed	69 699	29 471	12 430	713	5 296	25 875	38 454	35 134	6 128	111 600
ROOM NIGHTS OCCUPIED ('000)										
2001										
December quarter	4 437.3	4 055.1	2 003.4	76.5	535.4	3 529.4	4 285.3	1 481.7	587.5	10 495.8
2002										
October	1 683.0	1 540.3	773.4	27.8	200.0	1 302.8	1 648.8	576.9	240.4	3 996.7
November	1 642.2	1 405.6	721.1	26.6	178.2	1 201.6	1 571.7	564.8	226.0	3 768.9
December	1 444.6	1 227.0	680.8	25.5	163.3	1 079.9	1 375.3	503.4	205.2	3 352.5
December quarter	4 769.8	4 172.9	2 175.3	79.8	541.5	3 584.3	4 595.7	1 645.0	671.6	11 118.0
ROOM OCCUPANCY RATES (%)										
2001										
December quarter	61.5	52.2	62.0	36.2	43.1	53.9	64.0	66.8	45.5	57.6
2002										
October	70.1	59.5	70.6	40.1	49.3	60.8	73.0	75.9	53.4	65.7
November	70.8	56.1	68.0	39.6	45.4	58.0	72.0	76.8	52.1	64.0
December	60.8	47.4	62.2	36.7	39.8	50.4	61.6	66.3	45.8	55.3
December quarter	67.2	54.3	66.9	38.8	44.8	56.4	68.9	73.0	50.4	61.7
GUEST NIGHTS ('000)										
2001										
December quarter	7 425.6	7 186.9	4 498.2	119.3	976.1	6 573.1	7 814.7	2 512.3	1 115.1	19 110.6
2002										
October	2 765.5	2 730.8	1 689.1	46.7	360.7	2 398.6	2 982.2	945.8	451.3	7 185.4
November	2 666.8	2 397.3	1 510.5	42.3	308.8	2 138.3	2 752.1	919.2	414.0	6 574.6
December	2 554.4	2 273.7	1 604.3	41.3	306.0	2 095.0	2 686.7	890.6	412.9	6 432.5
December quarter	7 986.8	7 401.9	4 803.9	130.3	975.5	6 631.9	8 421.0	2 755.7	1 278.3	20 192.6
BED OCCUPANCY RATES (%)										
2001										
December quarter	39.1	31.6	41.7	17.9	26.6	33.9	40.4	44.4	29.3	36.4
2002										
October	44.0	36.1	46.9	21.3	30.4	38.1	46.2	47.8	34.4	41.2
November	43.9	32.7	43.3	19.9	26.9	35.0	44.0	48.1	32.7	38.9
December	40.9	30.1	44.5	18.8	25.5	33.3	41.9	45.1	31.7	36.9
December quarter	42.9	33.0	44.9	20.0	27.6	35.5	44.0	47.0	32.9	39.0

(a) Comprising establishments with 15 or more rooms or units. See Explanatory Notes, paragraph 7.

2

HOTELS, MOTELS, GUEST HOUSES AND SERVICED APARTMENTS (a)—Australia *continued*

STAR GRADING

Period	Licensed hotels with facilities	Motels and guest houses	Serviced apartments	1	2	3	4	5	Ungraded	Total
GUEST ARRIVALS ('000)										
2001										
December quarter	3 139.4	4 079.1	1 225.3	71.4	545.7	3 340.8	3 089.6	965.9	430.4	8 443.8
2002										
October	1 177.6	1 528.0	449.7	28.3	206.8	1 212.5	1 162.9	374.8	169.9	3 155.3
November	1 151.1	1 350.0	433.0	25.9	177.7	1 086.1	1 114.7	366.4	163.3	2 934.1
December	1 088.1	1 290.6	425.9	24.1	172.8	1 050.3	1 043.6	356.9	156.8	2 804.6
December quarter	3 416.7	4 168.5	1 308.6	78.3	557.4	3 349.0	3 321.2	1 098.0	490.0	8 893.9
AVERAGE LENGTH OF STAY (days)										
2001										
December quarter	2.4	1.8	3.7	1.7	1.8	2.0	2.5	2.6	2.6	2.3
2002										
December quarter	2.3	1.8	3.7	1.7	1.8	2.0	2.5	2.5	2.6	2.3
TAKINGS FROM ACCOMMODATION (\$'000)										
2001										
December quarter	611 507	355 294	242 753	4 613	35 358	310 665	527 088	278 068	53 762	1 209 554
2002										
October	234 904	138 668	93 914	1 714	13 393	116 294	204 034	108 739	23 312	467 486
November	229 532	125 655	87 373	1 602	11 703	107 249	193 908	106 257	21 840	442 560
December	204 096	111 947	87 964	1 553	11 419	99 314	174 118	96 605	20 998	404 008
December quarter	668 532	376 270	269 252	4 869	36 515	322 857	572 060	311 602	66 149	1 314 053
AVERAGE TAKINGS PER ROOM NIGHT OCCUPIED (\$)										
2001										
December quarter	137.8	87.6	121.2	60.3	66.0	88.0	123.0	187.7	91.5	115.2
2002										
October	139.6	90.0	121.4	61.6	67.0	89.3	123.7	188.5	97.0	117.0
November	139.8	89.4	121.2	60.3	65.7	89.3	123.4	188.1	96.6	117.4
December	141.3	91.2	129.2	61.0	69.9	92.0	126.6	191.9	102.3	120.5
December quarter	140.2	90.2	123.8	61.0	67.4	90.1	124.5	189.4	98.5	118.2
AVERAGE TAKINGS PER AVAILABLE ROOM NIGHT (\$)										
2001										
December quarter	84.7	45.8	75.1	21.8	28.4	47.4	78.7	125.3	41.6	66.4
2002										
October	97.9	53.6	85.8	24.7	33.0	54.3	90.4	143.1	51.8	76.8
November	99.0	50.1	82.4	23.9	29.8	51.7	88.9	144.5	50.3	75.2
December	85.9	43.3	80.4	22.4	27.8	46.4	78.1	127.2	46.9	66.7
December quarter	94.2	49.0	82.8	23.6	30.2	50.8	85.8	138.2	49.7	72.9

(a) Comprising establishments with 15 or more rooms or units. See Explanatory Notes, paragraph 7.

STAR GRADING

Period	Licensed hotels with facilities	Motels and guest houses	Serviced apartments	1	2	3	4	5	Ungraded	Total
ESTABLISHMENTS, CAPACITY AND EMPLOYMENT (number)										
December quarter 2001										
Establishments	201	990	135	33	180	703	230	26	154	1 326
Guest rooms	25 001	32 929	7 509	1 267	5 260	25 737	21 374	6 893	4 908	65 439
Bed spaces	61 687	96 837	24 332	4 489	15 385	74 511	58 275	15 336	14 860	182 856
Persons employed	19 860	11 483	2 706	318	1 925	8 890	11 766	9 543	1 607	34 049
December quarter 2002										
Establishments	198	979	130	32	179	691	232	25	148	1 307
Guest rooms	23 855	32 109	7 419	1 236	5 421	24 510	20 821	6 609	4 786	63 383
Bed spaces	58 854	94 446	23 320	4 400	15 780	70 863	56 143	15 065	14 369	176 620
Persons employed	18 573	11 207	2 813	299	1 895	8 328	11 209	9 202	1 660	32 593
ROOM NIGHTS OCCUPIED ('000)										
2001										
December quarter	1 414.0	1 577.0	419.5	38.6	223.3	1 291.6	1 277.9	406.8	172.4	3 410.6
2002										
October	522.7	593.9	164.4	13.0	86.0	475.4	479.4	158.7	68.5	1 281.0
November	538.7	529.2	160.6	12.4	75.5	434.5	476.4	164.3	65.5	1 228.5
December	457.7	479.6	147.6	12.6	72.6	394.1	405.6	140.2	59.8	1 084.9
December quarter	1 519.1	1 602.7	472.6	38.0	234.1	1 303.9	1 361.4	463.2	193.8	3 594.4
ROOM OCCUPANCY RATES (%)										
2001										
December quarter	61.7	52.1	60.8	33.1	46.1	54.6	65.2	64.1	38.5	56.8
2002										
October	71.2	59.7	71.5	34.0	52.7	62.7	74.3	77.5	46.3	65.4
November	75.8	55.0	72.2	33.4	47.8	59.2	76.3	82.9	45.6	64.8
December	63.9	48.3	64.5	32.9	43.2	52.1	65.2	68.4	40.3	56.0
December quarter	70.3	54.3	69.4	33.4	47.8	58.0	71.9	76.2	44.1	62.1
GUEST NIGHTS ('000)										
2001										
December quarter	2 292.9	2 829.0	870.6	63.1	407.9	2 382.9	2 170.9	668.0	299.6	5 992.5
2002										
October	850.3	1 078.2	335.9	21.0	158.1	875.3	834.4	251.5	124.1	2 264.4
November	866.3	913.1	316.5	18.8	132.6	758.8	811.1	258.9	115.7	2 095.9
December	800.8	900.1	329.1	19.4	135.7	751.7	769.2	239.6	114.4	2 030.0
December quarter	2 517.3	2 891.4	981.5	59.3	426.4	2 385.8	2 414.7	750.1	354.2	6 390.3
BED OCCUPANCY RATES (%)										
2001										
December quarter	40.6	31.8	38.9	15.3	28.8	34.8	40.7	47.3	22.2	35.7
2002										
October	47.0	36.9	46.5	15.4	33.2	39.9	47.9	53.9	28.0	41.5
November	49.4	32.3	45.2	14.3	28.8	35.8	48.2	57.3	26.8	39.7
December	45.0	30.8	45.7	14.2	27.7	34.4	45.4	51.3	25.7	37.5
December quarter	47.1	33.3	45.8	14.6	29.9	36.7	47.2	54.1	26.8	39.5

(a) Comprising establishments with 15 or more rooms or units. See Explanatory Notes, paragraph 7.

3

HOTELS, MOTELS, GUEST HOUSES AND SERVICED APARTMENTS (a)—NSW *continued*

STAR GRADING

Period	Licensed hotels with facilities	Motels and guest houses	Serviced apartments	1	2	3	4	5	Ungraded	Total
GUEST ARRIVALS ('000)										
2001										
December quarter	957.0	1 733.1	260.5	38.7	245.1	1 317.3	936.3	272.1	141.1	2 950.6
2002										
October	357.1	656.8	104.0	12.4	96.9	488.6	347.7	114.5	57.8	1 117.9
November	364.4	559.7	97.6	11.8	81.0	422.1	340.7	110.6	55.5	1 021.7
December	329.7	560.9	95.1	11.0	81.3	419.9	314.4	104.0	55.0	985.7
December quarter	1 051.2	1 777.4	296.6	35.3	259.3	1 330.5	1 002.8	329.0	168.3	3 125.2
AVERAGE LENGTH OF STAY (days)										
2001										
December quarter	2.4	1.6	3.3	1.6	1.7	1.8	2.3	2.5	2.1	2.0
2002										
December quarter	2.4	1.6	3.3	1.7	1.6	1.8	2.4	2.3	2.1	2.0
TAKINGS FROM ACCOMMODATION (\$'000)										
2001										
December quarter	211 366	141 233	60 252	2 437	14 685	115 986	175 114	89 382	15 246	412 850
2002										
October	76 965	53 826	22 625	844	5 675	42 548	64 114	33 917	6 318	153 416
November	81 061	48 098	22 891	811	4 986	39 527	64 632	35 814	6 281	152 050
December	70 264	45 063	21 786	826	5 205	37 081	56 688	31 473	5 841	137 114
December quarter	228 290	146 987	67 302	2 480	15 866	119 156	185 433	101 204	18 440	442 579
AVERAGE TAKINGS PER ROOM NIGHT OCCUPIED (\$)										
2001										
December quarter	149.5	89.6	143.6	63.1	65.8	89.8	137.0	219.7	88.4	121.1
2002										
October	147.2	90.6	137.6	64.8	66.0	89.5	133.7	213.7	92.3	119.8
November	150.5	90.9	142.5	65.5	66.1	91.0	135.7	218.0	95.9	123.8
December	153.5	94.0	147.6	65.4	71.7	94.1	139.8	224.5	97.7	126.4
December quarter	150.3	91.7	142.4	65.2	67.8	91.4	136.2	218.5	95.2	123.1
AVERAGE TAKINGS PER AVAILABLE ROOM NIGHT (\$)										
2001										
December quarter	92.2	46.7	87.3	20.9	30.3	49.0	89.3	140.9	34.1	68.7
2002										
October	104.8	54.2	98.4	22.0	34.8	56.1	99.3	165.5	42.7	78.3
November	114.0	50.0	102.8	21.9	31.6	53.9	103.5	180.6	43.7	80.2
December	98.1	45.4	95.2	21.6	31.0	49.0	91.1	153.6	39.4	70.7
December quarter	105.6	49.8	98.8	21.8	32.4	53.0	98.0	166.4	41.9	76.4

(a) Comprising establishments with 15 or more rooms or units. See Explanatory Notes, paragraph 7.

4

HOTELS, MOTELS, GUEST HOUSES AND SERVICED APARTMENTS (a)—Vic.

STAR GRADING

Period	Licensed hotels with facilities	Motels and guest houses	Serviced apartments	1	2	3	4	5	Ungraded	Total
ESTABLISHMENTS, CAPACITY AND EMPLOYMENT (number)										
December quarter 2001										
Establishments	130	497	84	8	67	372	203	20	41	711
Guest rooms	12 424	15 445	4 679	314	1 728	11 722	12 975	4 188	1 621	32 548
Bed spaces	29 393	44 818	14 393	908	5 329	33 424	34 794	9 268	4 881	88 604
Persons employed	14 189	5 386	1 758	85	726	4 225	6 372	9 060	865	21 333
December quarter 2002										
Establishments	130	495	89	8	65	371	205	21	44	714
Guest rooms	12 488	15 597	5 098	313	1 733	11 800	13 090	4 214	2 033	33 183
Bed spaces	29 796	45 068	15 335	907	5 313	33 557	34 937	9 408	6 077	90 199
Persons employed	14 072	5 384	1 752	99	705	3 948	6 439	8 952	1 065	21 208
ROOM NIGHTS OCCUPIED ('000)										
2001										
December quarter	746.7	710.2	300.4	15.3	53.8	558.5	778.7	274.8	76.3	1 757.3
2002										
October	272.7	266.2	116.6	5.4	19.5	201.7	288.2	100.5	40.1	655.4
November	269.9	246.7	109.0	5.2	18.9	188.5	272.9	101.7	38.5	625.7
December	237.1	206.7	102.8	4.8	16.3	163.9	237.0	90.2	34.5	546.6
December quarter	779.7	719.6	328.4	15.4	54.7	554.0	798.1	292.5	113.0	1 827.8
ROOM OCCUPANCY RATES (%)										
2001										
December quarter	65.5	50.0	69.8	52.8	33.8	51.8	65.2	71.3	51.9	58.7
2002										
October	70.2	55.1	73.8	55.7	36.2	55.1	70.8	76.9	63.7	63.6
November	72.2	52.7	71.3	55.3	36.4	53.2	69.6	80.5	63.1	62.9
December	61.4	42.8	65.0	49.4	30.4	44.8	58.6	69.1	54.7	53.2
December quarter	67.9	50.2	70.0	53.5	34.3	51.0	66.3	75.4	60.4	59.9
GUEST NIGHTS ('000)										
2001										
December quarter	1 164.2	1 240.1	585.8	19.5	98.0	998.0	1 326.7	409.3	138.6	2 990.0
2002										
October	412.4	462.7	223.1	10.1	35.2	355.2	479.8	143.6	74.3	1 098.2
November	406.3	420.0	200.9	9.1	34.0	328.6	443.4	145.7	66.5	1 027.3
December	381.7	374.3	209.3	8.7	31.2	301.8	420.9	137.1	65.6	965.3
December quarter	1 200.5	1 257.0	633.3	27.8	100.4	985.6	1 344.1	426.5	206.4	3 090.8
BED OCCUPANCY RATES (%)										
2001										
December quarter	43.2	30.1	44.2	23.3	20.0	32.5	41.4	48.0	31.4	36.7
2002										
October	44.5	33.1	46.9	35.9	21.4	34.1	44.2	49.3	39.4	39.2
November	45.5	31.1	43.7	33.3	21.3	32.6	42.4	51.6	36.5	38.0
December	41.4	26.8	44.0	30.9	19.0	29.0	38.9	47.0	34.8	34.5
December quarter	43.8	30.3	44.9	33.4	20.5	31.9	41.8	49.3	36.9	37.2

(a) Comprising establishments with 15 or more rooms or units. See Explanatory Notes, paragraph 7.

4

HOTELS, MOTELS, GUEST HOUSES AND SERVICED APARTMENTS (a)—Vic. *continued*

STAR GRADING

Period	Licensed hotels with facilities	Motels and guest houses	Serviced apartments	1	2	3	4	5	Ungraded	Total
GUEST ARRIVALS ('000)										
2001										
December quarter	522.6	722.0	174.7	13.9	57.2	520.4	608.1	170.6	49.1	1 419.3
2002										
October	195.8	265.7	60.9	7.8	21.0	184.9	224.7	62.9	21.2	522.4
November	191.4	251.4	61.6	7.2	20.9	173.9	219.4	62.0	21.0	504.4
December	184.9	225.1	62.7	6.9	19.8	160.0	206.1	61.5	18.5	472.7
December quarter	572.1	742.2	185.2	21.9	61.7	518.8	650.1	186.4	60.7	1 499.5
AVERAGE LENGTH OF STAY (days)										
2001										
December quarter	2.2	1.7	3.4	1.4	1.7	1.9	2.2	2.4	2.8	2.1
2002										
December quarter	2.1	1.7	3.4	1.3	1.6	1.9	2.1	2.3	3.4	2.1
TAKINGS FROM ACCOMMODATION (\$'000)										
2001										
December quarter	112 766	65 370	42 841	907	3 503	49 149	100 296	56 549	10 573	220 977
2002										
October	40 628	25 123	16 931	329	1 382	18 021	37 206	20 363	5 380	82 681
November	42 049	23 207	15 980	303	1 342	16 792	36 025	21 608	5 166	81 236
December	34 569	19 780	14 495	272	1 202	14 854	30 042	18 035	4 439	68 843
December quarter	117 245	68 109	47 406	904	3 927	49 667	103 273	60 006	14 985	232 761
AVERAGE TAKINGS PER ROOM NIGHT OCCUPIED (\$)										
2001										
December quarter	151.0	92.1	142.6	59.4	65.1	88.0	128.8	205.8	138.6	125.8
2002										
October	149.0	94.4	145.2	60.9	71.0	89.3	129.1	202.6	134.1	126.1
November	155.8	94.1	146.6	58.2	71.0	89.1	132.0	212.4	134.3	129.8
December	145.8	95.7	141.0	56.6	73.7	90.6	126.8	199.9	128.8	125.9
December quarter	150.4	94.6	144.3	58.7	71.8	89.6	129.4	205.2	132.6	127.3
AVERAGE TAKINGS PER AVAILABLE ROOM NIGHT (\$)										
2001										
December quarter	98.9	46.0	99.5	31.4	22.0	45.6	84.0	146.8	72.0	73.9
2002										
October	104.6	52.0	107.1	34.0	25.7	49.3	91.4	155.9	85.4	80.3
November	112.5	49.6	104.5	32.2	25.8	47.4	91.9	170.9	84.7	81.7
December	89.5	40.9	91.7	28.0	22.4	40.6	74.2	138.1	70.4	67.0
December quarter	102.1	47.5	101.1	31.4	24.6	45.8	85.8	154.8	80.1	76.3

(a) Comprising establishments with 15 or more rooms or units. See Explanatory Notes, paragraph 7.

STAR GRADING

Period	Licensed hotels with facilities	Motels and guest houses	Serviced apartments	1	2	3	4	5	Ungraded	Total
ESTABLISHMENTS, CAPACITY AND EMPLOYMENT (number)										
December quarter 2001										
Establishments	169	520	280	10	98	419	315	36	91	969
Guest rooms	20 822	18 647	13 877	302	2 650	15 311	23 153	8 376	3 554	53 346
Bed spaces	63 660	54 930	47 924	834	8 209	48 798	72 072	25 639	10 962	166 514
Persons employed	20 196	6 300	4 148	113	1 116	5 732	10 695	11 560	1 428	30 644
December quarter 2002										
Establishments	168	508	287	9	93	412	316	37	96	963
Guest rooms	20 639	18 209	13 582	282	2 439	14 703	22 993	8 517	3 496	52 430
Bed spaces	61 978	53 444	46 332	768	7 305	46 129	70 795	26 343	10 414	161 754
Persons employed	21 010	6 424	4 489	91	1 005	5 753	11 467	12 217	1 390	31 923
ROOM NIGHTS OCCUPIED ('000)										
2001										
December quarter	1 194.0	956.9	794.7	11.9	114.7	792.2	1 334.1	507.5	185.2	2 945.6
2002										
October	458.2	356.8	302.4	4.6	38.9	287.2	521.2	194.4	71.1	1 117.4
November	431.9	333.6	272.3	4.7	36.9	264.9	482.3	183.3	65.6	1 037.8
December	397.7	291.9	260.7	4.7	34.2	247.7	437.3	167.1	59.4	950.3
December quarter	1 287.8	982.3	835.4	14.0	110.0	799.8	1 440.9	544.8	196.1	3 105.5
ROOM OCCUPANCY RATES (%)										
2001										
December quarter	62.3	55.8	62.2	42.9	47.0	56.2	62.6	65.9	56.6	60.0
2002										
October	71.6	63.2	71.8	52.3	51.5	63.0	73.1	73.6	65.6	68.7
November	69.7	61.1	66.8	55.9	50.4	60.1	69.9	71.7	62.6	66.0
December	62.2	51.7	61.9	54.3	45.2	54.3	61.3	63.3	54.8	58.5
December quarter	67.8	58.6	66.9	54.1	49.0	59.1	68.1	69.5	61.0	64.4
GUEST NIGHTS ('000)										
2001										
December quarter	2 292.9	1 705.5	2 021.1	20.5	217.2	1 587.3	2 814.5	970.5	409.3	6 019.4
2002										
October	849.5	629.5	736.7	7.6	70.3	571.1	1 061.0	361.0	144.6	2 215.7
November	796.2	569.7	638.4	8.0	64.5	511.9	948.8	339.2	131.9	2 004.3
December	804.0	557.7	682.5	7.9	64.9	529.6	966.3	340.4	135.1	2 044.2
December quarter	2 449.7	1 756.9	2 057.6	23.6	199.8	1 612.6	2 976.1	1 040.6	411.6	6 264.2
BED OCCUPANCY RATES (%)										
2001										
December quarter	39.1	33.8	45.8	26.8	28.8	35.4	42.5	41.1	40.6	39.3
2002										
October	44.2	38.0	51.3	32.1	31.1	39.9	48.3	44.2	44.8	44.2
November	42.8	35.5	45.9	34.8	29.4	37.0	44.7	42.9	42.2	41.3
December	41.8	33.7	47.5	33.3	28.7	37.0	44.0	41.7	41.8	40.8
December quarter	43.0	35.7	48.3	33.4	29.7	38.0	45.7	42.9	43.0	42.1

(a) Comprising establishments with 15 or more rooms or units. See Explanatory Notes, paragraph 7.

5

HOTELS, MOTELS, GUEST HOUSES AND SERVICED APARTMENTS (a)—Qld *continued*

STAR GRADING

Period	Licensed hotels with facilities	Motels and guest houses	Serviced apartments	1	2	3	4	5	Ungraded	Total
GUEST ARRIVALS ('000)										
2001										
December quarter	815.2	838.9	471.3	8.0	105.3	664.0	889.5	334.2	124.3	2 125.4
2002										
October	307.9	304.8	168.2	3.3	35.5	231.7	340.0	125.4	45.0	780.8
November	300.3	273.7	161.8	3.4	31.1	212.7	320.8	124.9	42.8	735.8
December	296.0	265.9	154.8	3.4	29.7	212.6	307.7	121.5	41.8	716.7
December quarter	904.2	844.3	484.8	10.2	96.2	657.0	968.5	371.8	129.6	2 233.3
AVERAGE LENGTH OF STAY (days)										
2001										
December quarter	2.8	2.0	4.3	2.6	2.1	2.4	3.2	2.9	3.3	2.8
2002										
December quarter	2.7	2.1	4.2	2.3	2.1	2.5	3.1	2.8	3.2	2.8
TAKINGS FROM ACCOMMODATION (\$'000)										
2001										
December quarter	165 332	78 143	86 223	651	7 510	67 829	147 042	90 079	16 586	329 697
2002										
October	66 780	30 553	32 840	267	2 536	25 223	59 646	35 739	6 762	130 173
November	59 501	27 820	28 504	271	2 305	22 997	53 061	31 154	6 037	115 825
December	58 273	25 073	31 895	275	2 311	22 765	52 067	31 279	6 541	115 240
December quarter	184 554	83 446	93 238	813	7 153	70 984	164 775	98 172	19 341	361 238
AVERAGE TAKINGS PER ROOM NIGHT OCCUPIED (\$)										
2001										
December quarter	138.5	81.7	108.5	54.6	65.5	85.6	110.2	177.5	89.6	111.9
2002										
October	145.7	85.6	108.6	58.4	65.1	87.8	114.4	183.9	95.2	116.5
November	137.8	83.4	104.7	57.2	62.5	86.8	110.0	170.0	92.0	111.6
December	146.5	85.9	122.3	58.1	67.7	91.9	119.1	187.2	110.1	121.3
December quarter	143.3	84.9	111.6	57.9	65.0	88.7	114.4	180.2	98.6	116.3
AVERAGE TAKINGS PER AVAILABLE ROOM NIGHT (\$)										
2001										
December quarter	86.3	45.6	67.5	23.4	30.8	48.2	69.0	116.9	50.7	67.2
2002										
October	104.4	54.1	78.0	30.5	33.5	55.3	83.7	135.4	62.4	80.1
November	96.1	50.9	70.0	32.0	31.5	52.1	76.9	121.9	57.6	73.6
December	91.1	44.4	75.8	31.5	30.6	49.9	73.0	118.5	60.4	70.9
December quarter	97.2	49.8	74.6	31.3	31.9	52.5	77.9	125.3	60.1	74.9

(a) Comprising establishments with 15 or more rooms or units. See Explanatory Notes, paragraph 7.

STAR GRADING

Period	Licensed hotels with facilities	Motels and guest houses	Serviced apartments	1	2	3	4	5	Ungraded	Total
ESTABLISHMENTS, CAPACITY AND EMPLOYMENT (number)										
December quarter 2001										
Establishments	61	144	27	6	51	114	48	4	9	232
Guest rooms	4 083	5 170	1 283	138	1 498	4 381	3 031	1 263	225	10 536
Bed spaces	9 898	15 536	4 464	324	4 177	12 722	9 501	2 499	675	29 898
Persons employed	4 074	2 029	494	136	779	2 301	2 006	1 249	126	6 597
December quarter 2002										
Establishments	62	145	31	5	51	113	51	7	11	238
Guest rooms	4 362	5 232	1 435	126	1 491	4 150	3 354	1 650	258	11 029
Bed spaces	10 729	15 372	4 906	301	4 055	12 283	10 134	3 482	752	31 007
Persons employed	4 156	2 094	495	83	826	2 184	2 088	1 423	141	6 745
ROOM NIGHTS OCCUPIED ('000)										
2001										
December quarter	229.0	246.8	79.0	2.4	55.0	219.5	177.3	92.2	8.4	554.8
2002										
October	96.1	98.5	32.6	1.2	21.2	81.4	75.3	44.0	4.2	227.2
November	92.1	93.9	31.6	0.9	18.8	78.4	74.5	40.9	4.1	217.6
December	71.7	75.2	28.6	0.7	16.3	63.5	58.1	32.6	4.3	175.6
December quarter	259.9	267.7	92.8	2.9	56.2	223.3	207.9	117.5	12.5	620.5
ROOM OCCUPANCY RATES (%)										
2001										
December quarter	61.0	51.9	67.0	18.9	39.9	54.5	63.6	79.3	40.5	57.2
2002										
October	71.1	60.7	73.2	31.8	45.9	63.3	72.4	85.9	51.9	66.5
November	70.4	59.8	73.5	24.7	42.0	62.9	74.1	82.7	53.1	65.8
December	53.0	46.4	64.3	17.9	35.2	49.4	55.9	63.8	53.6	51.4
December quarter	64.8	55.6	70.3	24.8	41.0	58.5	67.4	77.4	52.9	61.1
GUEST NIGHTS ('000)										
2001										
December quarter	348.0	423.1	155.7	4.3	93.3	386.9	298.7	127.3	16.3	926.7
2002										
October	142.5	169.7	63.2	2.1	37.0	141.9	127.3	58.4	8.8	375.5
November	136.6	153.7	58.2	1.5	30.3	131.6	120.2	57.3	7.6	348.4
December	113.6	135.3	60.3	1.1	29.2	115.7	107.5	46.9	9.0	309.3
December quarter	392.7	458.7	181.8	4.6	96.4	389.2	354.9	162.5	25.5	1 033.2
BED OCCUPANCY RATES (%)										
2001										
December quarter	38.2	29.6	37.9	14.3	24.3	33.1	34.2	55.4	26.3	33.7
2002										
October	42.8	35.6	41.6	22.3	29.4	37.3	40.5	54.1	37.9	39.1
November	42.4	33.3	39.5	16.2	24.9	35.7	39.5	54.8	33.9	37.5
December	34.2	28.4	39.7	11.5	23.2	30.4	34.2	43.4	38.5	32.2
December quarter	39.8	32.4	40.3	16.7	25.9	34.4	38.1	50.7	36.8	36.2

(a) Comprising establishments with 15 or more rooms or units. See Explanatory Notes, paragraph 7.

STAR GRADING

<i>Period</i>	<i>Licensed hotels with facilities</i>	<i>Motels and guest houses</i>	<i>Serviced apartments</i>	<i>1</i>	<i>2</i>	<i>3</i>	<i>4</i>	<i>5</i>	<i>Ungraded</i>	<i>Total</i>
GUEST ARRIVALS ('000)										
2001										
<i>December quarter</i>	177.3	247.7	48.2	3.1	55.9	217.9	126.4	63.0	6.9	473.2
2002										
October	67.6	98.3	17.4	1.1	21.4	78.9	53.4	25.1	3.3	183.2
November	62.6	87.5	16.8	0.7	18.3	71.7	50.0	23.7	2.5	167.0
December	55.9	81.3	16.8	0.5	18.1	66.3	43.6	22.1	3.4	154.0
<i>December quarter</i>	186.1	267.1	51.0	2.3	57.7	217.0	147.0	70.9	9.2	504.2
AVERAGE LENGTH OF STAY (days)										
2001										
<i>December quarter</i>	2.0	1.7	3.2	1.4	1.7	1.8	2.4	2.0	2.4	2.0
2002										
<i>December quarter</i>	2.1	1.7	3.6	2.0	1.7	1.8	2.4	2.3	2.8	2.0
TAKINGS FROM ACCOMMODATION (\$'000)										
2001										
<i>December quarter</i>	26 556	21 044	8 217	125	3 389	17 829	20 625	13 179	670	55 817
2002										
October	11 572	8 585	3 643	57	1 308	6 785	8 646	6 670	334	23 800
November	11 274	8 233	3 564	41	1 135	6 544	8 684	6 354	313	23 071
December	8 204	6 605	3 217	37	1 036	5 298	6 749	4 548	358	18 026
<i>December quarter</i>	31 051	23 423	10 424	135	3 479	18 627	24 080	17 572	1 005	64 898
AVERAGE TAKINGS PER ROOM NIGHT OCCUPIED (\$)										
2001										
<i>December quarter</i>	116.0	85.3	104.0	51.9	61.6	81.2	116.4	143.0	79.9	100.6
2002										
October	120.4	87.1	111.8	46.1	61.7	83.3	114.9	151.7	80.5	104.7
November	122.4	87.7	112.7	44.1	60.5	83.5	116.5	155.2	76.2	106.0
December	114.4	87.8	112.4	52.6	63.6	83.4	116.1	139.3	83.6	102.7
<i>December quarter</i>	119.4	87.5	112.3	47.0	61.8	83.4	115.8	149.5	80.1	104.6
AVERAGE TAKINGS PER AVAILABLE ROOM NIGHT (\$)										
2001										
<i>December quarter</i>	70.7	44.2	69.6	9.8	24.6	44.2	74.0	113.4	32.4	57.6
2002										
October	85.6	52.9	81.9	14.7	28.3	52.7	83.2	130.4	41.8	69.6
November	86.2	52.5	82.8	10.9	25.4	52.6	86.3	128.4	40.4	69.7
December	60.7	40.7	72.3	9.4	22.4	41.2	64.9	88.9	44.8	52.7
<i>December quarter</i>	77.4	48.7	79.0	11.7	25.4	48.8	78.0	115.8	42.4	64.0

(a) Comprising establishments with 15 or more rooms or units. See Explanatory Notes, paragraph 7.

7

HOTELS, MOTELS, GUEST HOUSES AND SERVICED APARTMENTS (a)—WA

STAR GRADING

Period	Licensed hotels with facilities	Motels and guest houses	Serviced apartments	1 and Ungraded	2	3	4	5	Total
ESTABLISHMENTS, CAPACITY AND EMPLOYMENT (number)									
December quarter 2001									
Establishments	129	124	68	79	22	135	72	13	321
Guest rooms	9 464	5 561	4 103	2 554	683	7 423	5 838	2 630	19 128
Bed spaces	23 929	15 165	13 765	6 426	1 755	20 549	17 061	7 068	52 859
Persons employed	6 558	1 736	1 442	1 298	350	2 804	2 939	2 345	9 736
December quarter 2002									
Establishments	128	126	71	82	21	131	76	15	325
Guest rooms	9 438	5 579	4 165	2 593	661	7 287	5 917	2 724	19 182
Bed spaces	24 108	15 105	14 005	6 588	1 668	19 991	17 315	7 656	53 218
Persons employed	6 483	1 708	1 562	1 299	325	2 739	3 023	2 367	9 753
ROOM NIGHTS OCCUPIED ('000)									
2001									
December quarter	505.4	249.9	212.2	93.7	28.4	346.4	341.3	157.7	967.5
2002									
October	193.8	95.0	81.8	34.3	11.4	131.1	131.5	62.4	370.7
November	180.9	85.1	77.4	31.3	9.1	119.2	123.7	60.1	343.4
December	174.7	79.6	76.3	29.2	8.6	113.8	117.9	61.1	330.6
December quarter	549.4	259.7	235.5	94.8	29.1	364.1	373.0	183.7	1 044.6
ROOM OCCUPANCY RATES (%)									
2001									
December quarter	58.1	48.8	56.2	39.9	45.2	50.7	63.5	65.2	55.0
2002									
October	66.2	54.9	63.4	42.7	55.5	58.0	71.7	73.9	62.3
November	64.3	50.9	61.9	41.2	46.0	54.5	69.7	73.6	59.9
December	60.1	46.1	59.1	37.2	41.9	50.4	64.4	72.4	55.8
December quarter	63.6	50.6	61.5	40.4	47.8	54.3	68.6	73.3	59.3
GUEST NIGHTS ('000)									
2001									
December quarter	777.7	430.7	477.5	148.6	46.7	614.7	598.5	277.5	1 685.9
2002									
October	294.5	157.6	178.8	54.1	17.7	221.8	229.5	107.8	630.9
November	267.2	139.1	163.5	50.3	13.8	198.6	208.5	98.7	569.8
December	278.1	138.2	189.2	50.9	14.6	206.9	224.5	108.6	605.5
December quarter	839.8	434.9	531.5	155.3	46.2	627.3	662.5	315.0	1 806.2
BED OCCUPANCY RATES (%)									
2001									
December quarter	35.3	30.9	37.7	25.1	28.9	32.5	38.1	42.7	34.7
2002									
October	39.4	33.7	41.2	26.5	34.3	35.8	42.8	45.4	38.2
November	37.2	30.7	38.9	26.2	27.6	33.1	40.1	43.0	35.8
December	37.5	29.6	43.6	25.7	28.3	33.4	41.9	45.8	36.9
December quarter	38.1	31.3	41.3	26.1	30.1	34.1	41.6	44.7	37.0

(a) Comprising establishments with 15 or more rooms or units. See Explanatory Notes, paragraph 7.

7 HOTELS, MOTELS, GUEST HOUSES AND SERVICED APARTMENTS (a)—WA *continued*

STAR GRADING

Period	Licensed hotels with facilities	Motels and guest houses	Serviced apartments	1 and Ungraded	2	3	4	5	Total
GUEST ARRIVALS ('000)									
2001									
December quarter	362.4	218.7	142.1	65.0	24.4	295.9	237.9	100.0	723.2
2002									
October	136.0	76.9	51.0	24.2	8.7	102.3	91.1	37.6	263.9
November	124.0	67.3	47.3	23.3	6.9	88.8	82.9	36.7	238.5
December	127.0	67.7	52.3	22.5	6.4	92.5	85.0	40.6	247.1
December quarter	387.0	212.0	150.6	70.0	22.1	283.6	259.0	114.9	749.5
AVERAGE LENGTH OF STAY (days)									
2001									
December quarter	2.1	2.0	3.4	2.3	1.9	2.1	2.5	2.8	2.3
2002									
December quarter	2.2	2.1	3.5	2.2	2.1	2.2	2.6	2.7	2.4
TAKINGS FROM ACCOMMODATION (\$'000)									
2001									
December quarter	55 536	20 580	23 037	6 470	2 237	28 780	38 777	22 888	99 153
2002									
October	21 821	7 941	9 254	2 585	851	10 888	15 227	9 464	39 016
November	20 699	7 000	8 463	2 237	682	9 828	14 260	9 155	36 163
December	20 191	6 743	9 289	2 278	678	9 875	13 909	9 483	36 223
December quarter	62 711	21 684	27 006	7 100	2 212	30 592	43 397	28 101	111 402
AVERAGE TAKINGS PER ROOM NIGHT OCCUPIED (\$)									
2001									
December quarter	109.9	82.3	108.6	69.0	78.8	83.1	113.6	145.1	102.5
2002									
October	112.6	83.6	113.1	75.3	74.9	83.1	115.8	151.7	105.3
November	114.4	82.2	109.4	71.5	74.9	82.4	115.3	152.3	105.3
December	115.6	84.8	121.7	78.1	79.0	86.8	118.0	155.1	109.6
December quarter	114.1	83.5	114.7	74.9	76.1	84.0	116.3	153.0	106.6
AVERAGE TAKINGS PER AVAILABLE ROOM NIGHT (\$)									
2001									
December quarter	63.8	40.2	61.0	27.5	35.6	42.1	72.2	94.6	56.3
2002									
October	74.6	45.9	71.7	32.2	41.5	48.2	83.0	112.1	65.6
November	73.6	41.8	67.7	29.5	34.4	45.0	80.3	112.0	63.0
December	69.5	39.1	71.9	29.0	33.1	43.7	76.0	112.3	61.2
December quarter	72.5	42.3	70.5	30.2	36.4	45.6	79.8	112.1	63.3

(a) Comprising establishments with 15 or more rooms or units. See Explanatory Notes, paragraph 7.

STAR GRADING

<i>Period</i>	<i>Licensed hotels with facilities</i>	<i>Motels and guest houses</i>	<i>Serviced apartments</i>	<i>1 and ungraded</i>	<i>2</i>	<i>3</i>	<i>4 and 5</i>	<i>Total</i>
ESTABLISHMENTS, CAPACITY AND EMPLOYMENT (number)								
December quarter 2001								
Establishments	53	49	26	11	14	71	32	128
Guest rooms	2 900	1 646	1 011	301	439	2 629	2 188	5 557
Bed spaces	7 955	5 178	3 458	970	1 090	8 153	6 378	16 591
Persons employed	2 743	715	458	207	192	1 305	2 212	3 916
December quarter 2002								
Establishments	54	55	31	16	13	75	36	140
Guest rooms	2 867	1 801	1 129	431	408	2 748	2 210	5 797
Bed spaces	7 831	5 444	3 895	1 381	1 126	8 306	6 357	17 170
Persons employed	2 558	1 019	552	304	173	1 473	2 179	4 129
ROOM NIGHTS OCCUPIED ('000)								
2001								
<i>December quarter</i>	139.5	79.8	53.2	10.2	10.4	121.6	130.3	272.6
2002								
October	49.8	31.4	22.4	5.2	4.7	45.5	48.4	103.7
November	54.6	32.6	23.9	5.9	5.4	47.9	51.9	111.1
December	47.1	29.5	24.3	5.2	4.6	42.8	48.3	100.9
<i>December quarter</i>	151.4	93.6	70.7	16.2	14.6	136.2	148.7	315.7
ROOM OCCUPANCY RATES (%)								
2001								
<i>December quarter</i>	52.3	52.7	57.2	37.0	25.8	50.3	64.7	53.3
2002								
October	56.1	56.3	64.1	38.6	36.9	53.4	70.7	57.7
November	63.4	60.4	70.7	45.6	44.1	58.1	78.3	63.9
December	52.9	52.8	69.5	38.5	36.0	50.3	70.6	56.1
<i>December quarter</i>	57.4	56.5	68.1	40.9	39.0	53.9	73.1	59.2
GUEST NIGHTS ('000)								
2001								
<i>December quarter</i>	226.0	151.3	110.9	22.6	16.4	235.6	213.6	488.2
2002								
October	77.9	57.3	46.0	11.7	7.7	86.3	75.6	181.2
November	84.9	60.1	47.9	12.1	9.0	90.7	81.1	192.8
December	81.5	58.9	51.6	12.3	8.6	90.3	80.8	192.1
<i>December quarter</i>	244.3	176.3	145.4	36.0	25.3	267.3	237.5	566.1
BED OCCUPANCY RATES (%)								
2001								
<i>December quarter</i>	30.9	31.8	34.9	25.3	16.3	31.4	36.4	32.0
2002								
October	32.1	34.0	38.1	27.3	22.0	33.5	38.3	34.0
November	36.1	36.8	41.0	29.1	26.6	36.4	42.5	37.4
December	33.6	34.9	42.7	28.7	24.7	35.1	41.0	36.1
<i>December quarter</i>	33.9	35.2	40.6	28.3	24.4	35.0	40.6	35.8

(a) Comprising establishments with 15 or more rooms or units. See Explanatory Notes, paragraph 7.

STAR GRADING

Period	Licensed hotels with facilities	Motels and guest houses	Serviced apartments	1 and ungraded	2	3	4 and 5	Total
GUEST ARRIVALS ('000)								
2001								
December quarter	123.6	88.6	47.2	11.5	11.2	134.2	102.5	259.4
2002								
October	42.9	31.8	18.1	6.1	4.4	48.3	34.0	92.8
November	48.6	33.1	21.1	6.9	5.4	51.5	39.1	102.9
December	45.0	32.1	21.4	6.5	5.0	50.0	36.9	98.4
December quarter	136.5	97.0	60.6	19.5	14.8	149.8	110.0	294.1
AVERAGE LENGTH OF STAY (days)								
2001								
December quarter	1.8	1.7	2.3	2.0	1.5	1.8	2.1	1.9
2002								
December quarter	1.8	1.8	2.4	1.8	1.7	1.8	2.2	1.9
TAKINGS FROM ACCOMMODATION (\$'000)								
2001								
December quarter	13 313	7 295	6 254	960	627	9 963	15 311	26 862
2002								
October	4 796	2 912	2 490	494	266	3 731	5 707	10 198
November	4 959	3 090	2 709	535	301	3 981	5 941	10 758
December	4 713	2 920	2 623	552	259	3 813	5 632	10 256
December quarter	14 468	8 921	7 822	1 580	827	11 524	17 280	31 211
AVERAGE TAKINGS PER ROOM NIGHT OCCUPIED (\$)								
2001								
December quarter	95.4	91.4	117.6	93.8	60.1	81.9	117.5	98.6
2002								
October	96.2	92.6	111.0	95.6	57.0	82.1	117.9	98.3
November	90.9	94.7	113.1	90.7	55.8	83.1	114.4	96.8
December	100.2	99.0	107.8	107.2	56.9	89.0	116.5	101.7
December quarter	95.5	95.3	110.6	97.5	56.5	84.6	116.2	98.9
AVERAGE TAKINGS PER AVAILABLE ROOM NIGHT (\$)								
2001								
December quarter	49.9	48.2	67.2	34.7	15.5	41.2	76.1	52.5
2002								
October	54.0	52.2	71.2	36.9	21.0	43.8	83.3	56.7
November	57.7	57.2	80.0	41.4	24.6	48.3	89.6	61.9
December	53.0	52.3	75.0	41.3	20.5	44.8	82.2	57.1
December quarter	54.9	53.8	75.3	39.9	22.0	45.6	85.0	58.5

(a) Comprising establishments with 15 or more rooms or units. See Explanatory Notes, paragraph 7.

STAR GRADING

Period	Licensed hotels with facilities	Motels and guest houses	Serviced apartments	1 and Ungraded	2	3	4 and 5	Total
ESTABLISHMENTS, CAPACITY AND EMPLOYMENT (number)								
December quarter 2001								
Establishments	23	49	17	21	19	33	16	89
Guest rooms	1 976	3 187	1 146	737	776	2 512	2 284	6 309
Bed spaces	5 251	9 610	3 785	2 011	2 365	7 891	6 379	18 646
Persons employed	1 615	1 012	363	276	242	933	1 539	2 990
December quarter 2002								
Establishments	23	47	18	21	18	32	17	88
Guest rooms	2 012	3 185	1 189	752	745	2 528	2 361	6 386
Bed spaces	5 386	9 587	3 918	2 056	2 275	7 882	6 678	18 891
Persons employed	1 777	978	341	284	279	915	1 618	3 096
ROOM NIGHTS OCCUPIED ('000)								
2001								
December quarter	104.8	147.5	57.1	26.0	28.7	126.3	128.4	309.4
2002								
October	43.1	61.3	20.3	10.5	11.3	49.9	52.9	124.7
November	36.0	52.5	18.1	9.5	8.6	42.6	45.9	106.5
December	27.1	37.2	14.5	7.9	6.6	31.3	33.0	78.8
December quarter	106.1	151.0	53.0	27.9	26.5	123.8	131.9	310.0
ROOM OCCUPANCY RATES (%)								
2001								
December quarter	57.7	50.4	54.2	38.4	40.1	54.8	61.1	53.4
2002								
October	69.0	62.0	56.6	45.1	49.0	64.4	72.3	63.3
November	59.6	54.9	50.7	42.0	38.3	56.2	64.8	55.6
December	43.4	38.0	39.4	34.8	28.6	40.0	45.1	40.0
December quarter	57.3	51.6	48.8	40.7	38.6	53.5	60.7	52.9
GUEST NIGHTS ('000)								
2001								
December quarter	167.1	251.0	112.1	44.8	49.2	231.3	204.8	530.1
2002								
October	69.9	104.4	39.6	19.4	18.7	90.5	85.2	213.8
November	57.1	83.6	34.1	16.5	13.7	73.7	70.9	174.8
December	46.9	61.4	31.0	15.0	12.5	57.3	54.6	139.4
December quarter	174.0	249.3	104.7	50.9	44.9	221.6	210.7	528.0
BED OCCUPANCY RATES (%)								
2001								
December quarter	34.6	28.4	32.2	24.2	22.6	31.9	34.9	30.9
2002								
October	41.9	35.1	33.5	30.5	26.5	37.6	41.1	36.7
November	35.3	29.1	29.0	26.8	20.1	31.2	35.4	30.8
December	28.1	20.9	25.6	24.6	17.7	23.5	26.4	23.9
December quarter	35.1	28.4	29.3	27.3	21.4	30.7	34.3	30.5

(a) Comprising establishments with 15 or more rooms or units. See Explanatory Notes, paragraph 7.

STAR GRADING

Period	Licensed hotels with facilities	Motels and guest houses	Serviced apartments	1 and Ungraded	2	3	4 and 5	Total
GUEST ARRIVALS ('000)								
2001								
December quarter	100.4	153.1	42.1	22.5	29.8	135.5	107.8	295.5
2002								
October	40.7	61.1	14.8	8.3	11.7	55.5	41.1	116.6
November	35.0	49.8	13.5	6.9	9.1	46.3	36.0	98.3
December	27.5	35.2	11.3	5.7	8.1	33.2	27.0	74.0
December quarter	103.2	146.1	39.6	20.9	28.9	135.0	104.1	288.9
AVERAGE LENGTH OF STAY (days)								
2001								
December quarter	1.7	1.6	2.7	2.0	1.6	1.7	1.9	1.8
2002								
December quarter	1.7	1.7	2.6	2.4	1.6	1.6	2.0	1.8
TAKINGS FROM ACCOMMODATION (\$'000)								
2001								
December quarter	13 528	14 514	6 369	1 991	1 959	14 816	15 646	34 412
2002								
October	6 065	6 542	2 080	825	817	6 305	6 740	14 687
November	5 073	5 644	1 967	732	592	5 385	5 975	12 684
December	3 696	3 544	1 572	502	419	3 715	4 176	8 812
December quarter	14 834	15 731	5 618	2 059	1 828	15 405	16 891	36 183
AVERAGE TAKINGS PER ROOM NIGHT OCCUPIED (\$)								
2001								
December quarter	129.1	98.4	111.5	76.5	68.4	117.3	121.8	111.2
2002								
October	140.8	106.8	102.2	78.6	72.2	126.3	127.3	117.8
November	141.0	107.6	108.7	77.2	69.2	126.5	130.1	119.1
December	136.5	95.2	108.2	63.8	63.5	118.6	126.4	111.8
December quarter	139.8	104.2	106.1	73.9	69.1	124.4	128.1	116.7
AVERAGE TAKINGS PER AVAILABLE ROOM NIGHT (\$)								
2001								
December quarter	74.4	49.6	60.4	29.4	27.4	64.3	74.5	59.3
2002								
October	97.2	66.3	57.9	35.4	35.4	81.4	92.1	74.5
November	84.0	59.1	55.1	32.4	26.5	71.0	84.4	66.2
December	59.3	36.2	42.6	22.2	18.1	47.4	57.1	44.7
December quarter	80.1	53.8	51.8	30.1	26.7	66.5	77.8	61.8

(a) Comprising establishments with 15 or more rooms or units. See Explanatory Notes, paragraph 7.

STAR GRADING

<i>Period</i>	<i>Licensed hotels with facilities</i>	<i>Motels and guest houses</i>	<i>Serviced apartments</i>	<i>1 and ungraded</i>	<i>2</i>	<i>3</i>	<i>4 and 5</i>	<i>Total</i>
ESTABLISHMENTS, CAPACITY AND EMPLOYMENT (number)								
December quarter 2001								
Establishments	15	27	20	10	7	21	24	62
Guest rooms	1 904	1 845	1 521	482	479	1 488	2 821	5 270
Bed spaces	4 819	5 702	5 071	1 464	1 554	4 675	7 899	15 592
Persons employed	1 428	627	430	120	84	506	1 775	2 485
December quarter 2002								
Establishments	14	27	18	9	6	20	24	59
Guest rooms	1 855	1 853	1 333	464	333	1 435	2 809	5 041
Bed spaces	4 556	5 690	4 674	1 413	1 205	4 514	7 788	14 920
Persons employed	1 070	657	426	126	88	535	1 404	2 153
ROOM NIGHTS OCCUPIED ('000)								
2001								
<i>December quarter</i>	103.9	86.9	87.3	23.6	21.1	73.2	160.1	278.1
2002								
October	46.5	37.2	32.8	10.2	7.0	30.6	68.7	116.6
November	38.2	31.9	28.1	9.0	5.1	25.7	58.4	98.2
December	31.5	27.3	25.9	7.7	4.2	22.7	50.1	84.8
<i>December quarter</i>	116.3	96.4	86.9	26.8	16.4	79.0	177.3	299.5
ROOM OCCUPANCY RATES (%)								
2001								
<i>December quarter</i>	59.3	51.2	62.4	53.1	48.0	53.5	61.7	57.4
2002								
October	80.9	64.8	79.4	70.6	68.1	68.9	78.9	74.6
November	68.7	57.4	70.3	64.8	51.4	59.6	69.3	64.9
December	54.8	47.5	62.8	53.2	40.9	51.1	57.6	54.2
<i>December quarter</i>	68.1	56.5	70.8	62.9	53.5	59.9	68.6	64.6
GUEST NIGHTS ('000)								
2001								
<i>December quarter</i>	157.0	156.1	164.6	47.1	47.4	136.4	246.8	477.7
2002								
October	68.6	71.4	65.8	20.2	16.1	56.4	113.1	205.8
November	52.2	58.1	51.0	18.3	10.9	44.4	87.6	161.3
December	47.7	47.8	51.3	14.9	9.2	41.7	80.9	146.7
<i>December quarter</i>	168.5	177.3	168.1	53.4	36.2	142.6	281.6	513.8
BED OCCUPANCY RATES (%)								
2001								
<i>December quarter</i>	35.4	29.8	35.3	34.9	33.1	31.7	34.0	33.3
2002								
October	48.6	40.5	45.4	46.1	43.0	40.3	46.8	44.5
November	38.2	34.0	36.4	43.2	30.3	32.8	37.5	36.0
December	33.8	27.1	35.4	34.0	24.7	29.8	33.5	31.7
<i>December quarter</i>	40.2	33.9	39.1	41.1	32.7	34.3	39.3	37.4

(a) Comprising establishments with 15 or more rooms or units. See Explanatory Notes, paragraph 7.

STAR GRADING

<i>Period</i>	<i>Licensed hotels with facilities</i>	<i>Motels and guest houses</i>	<i>Serviced apartments</i>	<i>1 and ungraded</i>	<i>2</i>	<i>3</i>	<i>4 and 5</i>	<i>Total</i>
GUEST ARRIVALS ('000)								
2001								
<i>December quarter</i>	80.9	77.1	39.2	17.7	16.6	55.6	107.2	197.2
2002								
October	29.6	32.6	15.5	7.7	7.3	22.3	40.3	77.7
November	24.7	27.5	13.2	7.1	5.0	19.0	34.3	65.5
December	22.1	22.4	11.5	5.6	4.4	15.9	30.2	56.0
<i>December quarter</i>	76.4	82.5	40.3	20.4	16.7	57.2	104.8	199.2
AVERAGE LENGTH OF STAY (days)								
2001								
<i>December quarter</i>	1.9	2.0	4.2	2.7	2.8	2.5	2.3	2.4
2002								
<i>December quarter</i>	2.2	2.1	4.2	2.6	2.2	2.5	2.7	2.6
TAKINGS FROM ACCOMMODATION (\$'000)								
2001								
<i>December quarter</i>	13 110	7 116	9 560	1 758	1 447	6 312	20 268	29 785
2002								
October	6 276	3 187	4 052	829	557	2 794	9 335	13 516
November	4 915	2 562	3 295	716	359	2 195	7 502	10 772
December	4 186	2 220	3 088	630	308	1 914	6 642	9 494
<i>December quarter</i>	15 378	7 969	10 435	2 176	1 225	6 902	23 479	33 782
AVERAGE TAKINGS PER ROOM NIGHT OCCUPIED (\$)								
2001								
<i>December quarter</i>	126.2	81.9	109.5	74.6	68.4	86.2	126.6	107.1
2002								
October	134.9	85.7	123.5	81.6	79.3	91.2	135.8	116.0
November	128.6	80.3	117.3	79.4	70.0	85.5	128.5	109.7
December	132.7	81.4	119.0	82.3	73.0	84.2	132.5	112.0
<i>December quarter</i>	132.2	82.7	120.1	81.1	74.7	87.3	132.4	112.8
AVERAGE TAKINGS PER AVAILABLE ROOM NIGHT (\$)								
2001								
<i>December quarter</i>	74.8	41.9	68.3	39.6	32.8	46.1	78.1	61.4
2002								
October	109.1	55.5	98.1	57.7	54.0	62.8	107.2	86.5
November	88.3	46.1	82.4	51.5	36.0	51.0	89.0	71.2
December	72.8	38.6	74.7	43.8	29.9	43.0	76.3	60.8
<i>December quarter</i>	90.1	46.7	85.1	51.0	40.0	52.3	90.9	72.8

(a) Comprising establishments with 15 or more rooms or units. See Explanatory Notes, paragraph 7.

Period	South Coast	Illawarra	Sydney	Snowy Mountains	Capital Country	The Murray	Riverina	Explorer Country
ESTABLISHMENTS, CAPACITY AND EMPLOYMENT (number)								
December quarter 2001								
Establishments	82	33	296	55	68	99	69	121
Guest rooms	2 015	1 126	33 362	2 265	2 126	2 860	1 954	3 495
Bed spaces	6 240	3 460	82 509	9 013	6 008	8 850	5 773	10 580
Persons employed	673	618	21 012	365	836	914	654	1 247
December quarter 2002								
Establishments	82	32	280	58	67	98	69	121
Guest rooms	2 006	1 118	31 007	2 318	2 131	2 833	1 986	3 560
Bed spaces	6 083	3 592	76 272	9 110	6 044	8 766	5 826	10 559
Persons employed	679	608	19 438	397	917	920	640	1 244
ROOM NIGHTS OCCUPIED ('000)								
2001								
December quarter	89.5	57.0	1 936.1	23.6	99.0	137.0	96.8	175.5
2002								
October	34.4	21.0	711.5	7.8	36.5	53.7	37.1	68.6
November	32.2	20.5	737.0	8.0	32.0	48.5	31.1	53.8
December	31.0	18.4	638.2	8.0	26.1	38.6	27.0	49.6
December quarter	97.5	60.0	2 086.7	23.8	94.7	140.9	95.2	172.0
ROOM OCCUPANCY RATES (%)								
2001								
December quarter	48.3	55.0	63.3	11.4	50.6	52.0	53.8	54.6
2002								
October	55.8	60.7	74.1	10.8	55.3	61.1	60.2	62.2
November	53.5	61.2	79.2	11.6	50.1	57.1	52.2	50.4
December	49.9	53.0	68.1	11.1	39.6	44.0	43.9	44.9
December quarter	53.0	58.3	73.8	11.2	48.3	54.0	52.1	52.5
GUEST NIGHTS ('000)								
2001								
December quarter	170.2	96.8	3 230.6	50.0	180.5	257.2	160.9	314.1
2002								
October	64.1	36.6	1 189.9	16.9	66.5	101.5	63.5	130.9
November	58.5	33.0	1 218.5	16.5	55.4	89.8	49.0	89.2
December	61.7	35.4	1 142.9	18.2	47.8	76.2	48.3	92.2
December quarter	184.4	104.9	3 551.2	51.7	169.7	267.4	160.8	312.3
GUEST ARRIVALS ('000)								
2001								
December quarter	97.6	49.2	1 296.7	26.8	118.4	150.4	114.2	221.0
2002								
October	36.6	17.9	494.0	8.9	39.8	59.9	44.1	87.6
November	34.7	18.0	497.5	9.6	34.2	52.1	34.8	61.4
December	33.7	17.2	465.0	8.7	31.2	45.5	35.7	66.9
December quarter	105.1	53.0	1 456.5	27.1	105.1	157.5	114.6	215.9
TAKINGS FROM ACCOMMODATION (\$'000)								
2001								
December quarter	7 324	6 159	276 845	1 919	8 901	10 716	7 625	13 688
2002								
October	2 736	2 386	99 653	684	3 600	4 309	3 016	5 749
November	2 547	2 269	106 213	674	3 107	3 913	2 528	4 263
December	2 808	2 159	93 006	716	2 399	3 161	2 195	3 925
December quarter	8 091	6 814	298 872	2 073	9 106	11 383	7 738	13 937

<i>Period</i>	<i>Hunter</i>	<i>North Coast NSW</i>	<i>Northern Rivers Tropical NSW</i>	<i>Big Sky Country</i>	<i>The Living Outback</i>	<i>Central Coast</i>	<i>Blue Mountains</i>
ESTABLISHMENTS, CAPACITY AND EMPLOYMENT (number)							
December quarter 2001							
Establishments	101	124	77	91	38	39	33
Guest rooms	3 973	3 844	2 173	2 523	949	1 515	1 259
Bed spaces	12 421	12 165	6 866	7 607	2 799	5 029	3 536
Persons employed	2 342	1 732	679	862	290	902	923
December quarter 2002							
Establishments	102	123	75	92	38	39	31
Guest rooms	4 189	3 841	2 126	2 594	946	1 509	1 219
Bed spaces	12 999	12 013	6 683	7 727	2 726	4 914	3 306
Persons employed	2 521	1 773	684	861	270	834	807
ROOM NIGHTS OCCUPIED ('000)							
2001							
<i>December quarter</i>	199.4	206.8	110.8	110.2	40.4	70.1	58.4
2002							
October	78.7	79.2	41.7	44.0	17.4	27.7	21.7
November	73.7	67.6	35.8	33.4	12.6	24.1	18.1
December	62.6	68.9	34.4	31.6	10.7	23.7	16.0
<i>December quarter</i>	214.9	215.7	111.9	109.0	40.7	75.6	55.7
ROOM OCCUPANCY RATES (%)							
2001							
<i>December quarter</i>	54.6	58.5	55.6	47.5	46.2	50.3	50.4
2002							
October	62.9	66.5	63.3	54.7	59.3	59.3	57.4
November	60.9	58.6	57.2	42.9	44.6	53.3	49.5
December	48.4	57.9	53.2	39.3	36.5	50.8	42.2
<i>December quarter</i>	57.3	61.0	58.0	45.7	46.8	54.4	49.7
GUEST NIGHTS ('000)							
2001							
<i>December quarter</i>	377.2	431.3	215.7	189.0	69.6	144.6	104.8
2002							
October	150.3	164.7	79.5	76.1	30.0	54.9	39.0
November	136.2	134.6	65.8	52.1	20.0	47.3	30.0
December	127.0	152.0	71.1	55.8	19.1	53.6	28.7
<i>December quarter</i>	413.5	451.3	216.4	184.0	69.1	155.9	97.7
GUEST ARRIVALS ('000)							
2001							
<i>December quarter</i>	197.2	244.3	120.1	134.8	42.5	74.0	63.2
2002							
October	77.9	90.6	42.2	49.3	17.2	27.1	25.0
November	72.9	75.0	37.5	36.2	11.8	25.9	20.2
December	65.1	83.4	37.3	40.7	11.9	24.6	18.8
<i>December quarter</i>	215.8	249.0	117.0	126.1	40.8	77.6	64.0
TAKINGS FROM ACCOMMODATION (\$'000)							
2001							
<i>December quarter</i>	23 686	19 541	9 822	8 126	2 695	8 515	7 288
2002							
October	9 541	7 669	3 661	3 388	1 153	3 145	2 726
November	8 739	6 416	3 172	2 472	847	2 734	2 155
December	7 814	7 499	3 451	2 403	728	2 961	1 888
<i>December quarter</i>	26 095	21 584	10 284	8 264	2 728	8 841	6 769

Period	Melbourne	Wimmera	Mallee	Western	Western Grampians	Bendigo Loddon	Peninsula	Central Murray	Goulburn	High Country
ESTABLISHMENTS, CAPACITY AND EMPLOYMENT (number)										
December quarter 2001										
Establishments	238	6	41	54	20	31	21	23	27	73
Guest rooms	19 076	117	1 229	1 436	489	782	741	602	700	1 935
Bed spaces	48 070	339	3 660	4 354	1 416	2 349	1 996	1 715	2 008	6 816
Persons employed	15 368	28	483	797	238	354	393	173	394	596
December quarter 2002										
Establishments	243	6	41	53	19	31	20	23	27	72
Guest rooms	19 704	116	1 227	1 416	471	796	712	602	699	1 905
Bed spaces	50 039	332	3 673	4 329	1 354	2 382	1 887	1 714	2 017	6 597
Persons employed	15 235	22	409	743	222	352	401	173	366	601
ROOM NIGHTS OCCUPIED ('000)										
2001										
December quarter	1 205.8	5.2	58.3	72.4	22.5	40.0	29.6	27.0	31.9	41.9
2002										
October	446.9	1.3	23.9	25.1	8.7	15.9	9.9	10.3	11.4	15.3
November	430.2	1.2	19.1	25.8	8.0	13.9	10.8	8.8	11.1	16.1
December	383.4	0.9	16.2	23.3	6.0	10.1	9.8	7.1	9.2	13.2
December quarter	1 260.4	3.3	59.1	74.1	22.6	39.9	30.5	26.2	31.7	44.6
ROOM OCCUPANCY RATES (%)										
2001										
December quarter	68.7	48.4	51.5	54.8	50.1	55.7	43.4	48.8	49.5	24.0
2002										
October	73.0	35.5	62.9	57.1	59.5	64.5	44.6	55.1	52.7	25.9
November	72.9	33.6	51.8	60.7	56.3	58.2	50.6	49.0	52.9	28.1
December	62.9	24.0	42.5	53.0	40.9	40.9	44.5	37.9	42.4	22.3
December quarter	69.5	31.0	52.4	56.9	52.2	54.5	46.5	47.3	49.3	25.4
GUEST NIGHTS ('000)										
2001										
December quarter	1 993.6	7.6	101.3	138.8	37.1	71.1	53.7	47.2	50.8	85.4
2002										
October	732.6	2.2	40.5	45.5	14.1	27.9	17.1	16.5	18.4	29.9
November	687.8	1.9	31.1	48.0	12.6	23.5	18.5	15.0	19.4	30.9
December	663.1	1.6	29.0	47.6	10.1	17.9	17.6	12.5	15.8	27.3
December quarter	2 083.5	5.8	100.6	141.1	36.8	69.3	53.2	44.0	53.6	88.1
GUEST ARRIVALS ('000)										
2001										
December quarter	802.2	4.6	62.5	88.7	27.3	44.8	30.5	30.5	35.5	47.1
2002										
October	299.6	1.9	24.6	30.3	10.8	16.7	9.9	10.7	12.5	17.4
November	293.2	1.4	20.0	31.4	9.6	15.1	11.4	9.5	12.5	17.2
December	284.7	1.3	19.2	29.4	7.8	11.9	10.5	8.0	10.7	15.3
December quarter	877.6	4.7	63.8	91.1	28.2	43.7	31.8	28.1	35.6	49.8
TAKINGS FROM ACCOMMODATION (\$'000)										
2001										
December quarter	170 799	291	4 399	7 254	1 786	3 529	3 631	2 094	2 525	3 665
2002										
October	63 486	82	1 864	2 405	734	1 467	1 178	807	951	1 339
November	63 012	72	1 475	2 488	683	1 280	1 331	701	959	1 476
December	52 970	57	1 299	2 543	517	943	1 272	586	762	1 248
December quarter	179 469	211	4 638	7 437	1 933	3 690	3 781	2 094	2 672	4 063

Period	Lakes	Gippsland	Melbourne East	Geelong	Macedon	Spa Country	Ballarat	Central Highlands	Upper Yarra	Murray East	Phillip Island
ESTABLISHMENTS, CAPACITY AND EMPLOYMENT (number)											
December quarter 2001											
Establishments	24	34	12	23	3	5	25	15	11	14	11
Guest rooms	666	998	360	804	72	125	873	358	389	422	374
Bed spaces	1 956	2 925	875	2 179	163	298	2 764	1 148	1 035	1 181	1 357
Persons employed	238	277	322	434	56	125	477	102	203	115	160
December quarter 2002											
Establishments	23	34	14	23	3	5	25	15	11	15	11
Guest rooms	612	1 018	481	804	72	126	871	357	386	433	375
Bed spaces	1 800	2 874	1 200	2 167	163	301	2 734	1 171	996	1 160	1 309
Persons employed	262	304	472	428	47	127	465	104	200	130	145
ROOM NIGHTS OCCUPIED ('000)											
2001											
December quarter	25.0	36.8	12.5	36.9	1.9	7.3	43.1	15.4	11.7	15.1	17.0
2002											
October	7.9	14.5	5.9	14.1	1.0	2.1	18.7	6.2	3.9	6.5	6.1
November	8.3	13.4	6.1	14.0	0.8	2.3	15.3	5.2	3.5	6.3	5.7
December	8.3	11.7	4.9	12.3	0.4	1.8	11.0	4.0	2.3	5.6	5.3
December quarter	24.6	39.6	17.0	40.4	2.2	6.2	45.0	15.3	9.7	18.4	17.1
ROOM OCCUPANCY RATES (%)											
2001											
December quarter	40.7	40.1	37.7	49.9	29.0	63.3	53.6	46.9	32.8	38.8	49.3
2002											
October	41.8	45.9	39.9	56.5	44.4	53.3	69.1	55.6	32.5	48.2	52.6
November	45.4	43.8	42.5	58.1	36.8	61.9	58.4	48.1	30.0	48.5	50.6
December	43.7	37.1	32.7	49.5	18.6	45.0	40.9	36.1	19.6	42.1	45.2
December quarter	43.6	42.2	38.3	54.7	33.2	53.3	56.1	46.6	27.3	46.2	49.4
GUEST NIGHTS ('000)											
2001											
December quarter	47.4	55.0	19.3	60.7	2.6	11.0	91.3	31.3	18.1	25.3	41.7
2002											
October	13.8	22.4	9.0	22.3	1.2	3.5	40.8	11.6	6.2	10.4	12.2
November	14.9	20.3	9.0	21.7	1.0	3.8	29.7	9.6	5.6	9.8	12.8
December	16.0	18.9	8.0	20.6	0.6	2.5	22.4	7.4	3.9	9.4	13.2
December quarter	44.7	61.6	26.0	64.7	2.8	9.8	92.9	28.6	15.7	29.6	38.3
GUEST ARRIVALS ('000)											
2001											
December quarter	32.6	33.0	13.2	34.7	1.3	5.8	53.7	21.2	9.3	16.1	24.7
2002											
October	10.3	13.6	5.0	10.5	0.8	2.3	21.8	6.9	3.5	6.5	6.8
November	10.7	12.5	4.9	11.5	0.6	2.1	17.3	6.0	3.1	6.3	8.2
December	11.6	11.3	4.5	10.8	0.4	1.2	12.8	4.7	2.2	6.4	8.2
December quarter	32.6	37.4	14.4	32.8	1.7	5.6	51.8	17.5	8.8	19.2	23.2
TAKINGS FROM ACCOMMODATION (\$'000)											
2001											
December quarter	1 957	2 759	1 528	3 857	232	1 059	3 957	1 267	1 477	1 084	1 827
2002											
October	621	1 068	759	1 453	103	368	1 828	493	531	470	673
November	674	999	784	1 465	80	454	1 428	422	388	467	598
December	706	885	622	1 307	47	419	993	334	281	410	642
December quarter	2 001	2 952	2 165	4 225	230	1 242	4 249	1 250	1 199	1 348	1 912

Period	Gold Coast	Brisbane	Sunshine Coast	Hervey Bay/ Maryborough	Darling Downs	Bundaberg
ESTABLISHMENTS, CAPACITY AND EMPLOYMENT (number)						
December quarter 2001						
Establishments	147	165	98	43	65	27
Guest rooms	13 299	9 889	4 602	1 612	1 656	690
Bed spaces	44 010	27 359	15 960	5 515	5 207	2 119
Persons employed	8 740	6 577	2 360	770	596	228
December quarter 2002						
Establishments	146	156	102	44	63	27
Guest rooms	12 830	9 478	4 736	1 616	1 602	693
Bed spaces	41 330	26 354	16 214	5 479	5 043	2 151
Persons employed	8 959	6 455	2 488	782	587	262
ROOM NIGHTS OCCUPIED ('000)						
2001						
December quarter	804.6	585.1	255.4	73.3	76.7	35.3
2002						
October	294.9	208.8	103.5	27.8	28.6	12.5
November	275.6	205.6	91.3	24.2	23.8	11.5
December	272.8	175.2	92.7	25.6	21.2	10.8
December quarter	843.3	589.5	287.5	77.6	73.6	34.8
ROOM OCCUPANCY RATES (%)						
2001						
December quarter	65.8	64.3	60.3	49.5	50.3	55.6
2002						
October	74.1	71.1	70.5	55.6	57.6	58.4
November	71.6	72.3	64.3	50.0	49.5	55.4
December	68.6	59.6	63.2	51.0	42.7	50.2
December quarter	71.4	67.6	66.0	52.2	50.0	54.7
GUEST NIGHTS ('000)						
2001						
December quarter	1 909.5	957.0	681.6	152.0	136.3	71.5
2002						
October	670.7	331.4	264.0	55.1	49.2	22.3
November	626.9	321.0	221.1	45.1	39.9	20.4
December	663.2	306.7	260.6	55.9	38.8	22.0
December quarter	1 960.8	959.1	745.7	156.2	127.9	64.7
GUEST ARRIVALS ('000)						
2001						
December quarter	512.4	408.3	206.3	75.2	93.3	43.0
2002						
October	186.9	139.1	73.2	28.9	34.2	14.2
November	185.0	137.9	70.8	24.1	27.9	13.7
December	184.0	129.3	67.4	26.6	27.9	15.4
December quarter	555.8	406.3	211.4	79.5	90.0	43.3
TAKINGS FROM ACCOMMODATION (\$'000)						
2001						
December quarter	91 751	59 712	33 316	6 141	5 685	3 038
2002						
October	35 338	22 318	12 622	2 331	2 216	1 071
November	29 287	22 437	11 162	1 918	1 804	939
December	33 211	18 329	13 874	2 469	1 629	1 010
December quarter	97 836	63 084	37 658	6 718	5 648	3 020

Period	Fitzroy	Mackay	Whitsunday (a)	Northern (a)	Tropical North Queensland	Outback	Great Barrier Reef (b)
ESTABLISHMENTS, CAPACITY AND EMPLOYMENT (number)							
December quarter 2001							
Establishments	87	51	27	48	157	54	17
Guest rooms	3 238	1 647	2 684	2 231	10 313	1 485	2 713
Bed spaces	10 248	4 771	9 593	6 533	30 923	4 276	9 245
Persons employed	1 621	943	2 240	1 271	4 800	498	2 828
December quarter 2002							
Establishments	85	51	28	47	159	55	17
Guest rooms	3 170	1 646	2 677	2 157	10 332	1 493	2 732
Bed spaces	9 586	4 785	8 972	6 329	31 208	4 303	8 470
Persons employed	1 612	890	2 607	1 237	5 527	517	3 041
ROOM NIGHTS OCCUPIED ('000)							
2001							
December quarter	177.9	83.8	129.7	111.7	554.2	57.9	145.0
2002							
October	64.7	32.1	53.1	41.1	225.9	24.3	57.8
November	60.2	30.1	46.5	40.4	208.4	20.2	49.9
December	52.3	28.7	46.7	33.9	175.2	15.3	52.1
December quarter	177.2	90.8	146.3	115.4	609.4	59.9	159.8
ROOM OCCUPANCY RATES (%)							
2001							
December quarter	59.7	55.4	52.5	54.4	58.4	42.5	58.1
2002							
October	65.8	62.9	64.0	61.5	70.5	52.5	68.3
November	63.3	60.9	57.9	62.4	67.2	45.2	60.9
December	53.2	56.2	56.3	50.7	54.7	33.2	61.5
December quarter	60.8	60.0	59.4	58.1	64.1	43.6	63.6
GUEST NIGHTS ('000)							
2001							
December quarter	311.2	147.6	322.7	181.1	1 063.2	85.6	357.5
2002							
October	104.6	50.9	119.1	68.1	444.3	35.8	126.2
November	95.7	49.8	100.8	64.4	391.5	27.7	108.9
December	93.4	52.7	110.9	60.0	356.5	23.3	119.9
December quarter	293.8	153.5	330.7	192.5	1 192.4	86.8	355.1
GUEST ARRIVALS ('000)							
2001							
December quarter	153.0	67.3	96.0	91.8	325.7	53.2	82.8
2002							
October	51.2	23.9	35.1	32.4	140.2	21.6	30.1
November	46.9	22.1	34.1	29.8	127.3	16.3	28.9
December	47.4	22.5	35.3	27.8	117.7	15.4	29.7
December quarter	145.5	68.5	104.5	89.9	385.2	53.3	88.6
TAKINGS FROM ACCOMMODATION (\$'000)							
2001							
December quarter	15 455	6 857	24 048	9 969	69 496	4 229	33 017
2002							
October	5 710	2 911	10 029	3 744	30 081	1 802	13 616
November	5 277	2 611	8 509	3 627	26 767	1 487	11 668
December	4 911	2 550	10 118	3 173	22 837	1 129	13 276
December quarter	15 899	8 072	28 656	10 544	79 685	4 418	38 560

(a) Changes in the Statistical Local Areas making up these Tourism Regions have resulted in changes to previously published figures.

(b) Includes those parts of other Tourism Regions which fall within the Great Barrier Reef geographic area. Great Barrier Reef (TR) data is not included in Queensland totals because the establishments in this Region are included in the figures for other Tourism Regions.

Period	Limestone Coast	Murray-lands	Fleurieu Peninsula	Adelaide	Adelaide Hills	Barossa	Riverland	Clare Valley	Flinders Ranges	Outback SA	Eyre Peninsula	Yorke Peninsula	Kangaroo Island
ESTABLISHMENTS, CAPACITY AND EMPLOYMENT (number)													
December quarter 2001													
Establishments	32	4	16	85	4	9	14	4	19	8	24	8	5
Guest rooms	944	96	541	5 729	131	366	501	128	647	384	770	149	150
Bed spaces	2 811	304	1 733	15 746	327	1 029	1 470	402	1 971	1 060	2 177	463	405
Persons employed	458	40	293	3 553	138	320	517	73	285	185	544	73	118
December quarter 2002													
Establishments	34	4	14	92	4	9	14	4	19	8	23	8	5
Guest rooms	979	96	493	6 251	132	364	497	128	660	374	755	149	151
Bed spaces	2 922	311	1 505	17 095	331	1 039	1 496	397	1 877	1 030	2 142	451	411
Persons employed	451	41	259	3 752	122	319	531	78	329	177	511	76	99
ROOM NIGHTS OCCUPIED ('000)													
2001													
December quarter	44.4	4.9	17.2	346.3	7.4	16.5	21.9	7.2	29.1	13.4	32.9	4.9	8.8
2002													
October	18.5	2.1	7.1	142.5	2.4	7.3	8.8	3.1	12.9	5.3	12.2	1.9	3.2
November	17.5	1.7	6.7	141.3	2.3	7.0	7.6	2.6	10.3	4.3	11.4	1.6	3.4
December	13.6	1.2	5.8	111.7	2.2	5.2	5.9	1.9	9.4	3.8	10.5	1.5	2.8
December quarter	49.6	5.0	19.6	395.5	6.9	19.5	22.3	7.5	32.6	13.4	34.1	5.0	9.4
ROOM OCCUPANCY RATES (%)													
2001													
December quarter	51.1	55.2	34.5	65.7	61.4	48.9	47.6	61.5	48.9	37.8	46.4	35.7	63.5
2002													
October	61.0	71.6	46.3	73.5	58.4	64.9	57.0	77.2	63.2	45.6	52.2	40.9	68.5
November	59.7	60.1	45.2	75.4	58.9	63.7	50.9	66.6	51.9	38.4	50.1	36.0	74.5
December	44.7	39.2	38.2	57.6	52.9	46.1	38.3	48.1	46.1	33.2	45.0	32.8	60.8
December quarter	55.1	56.9	43.2	68.8	56.7	58.2	48.7	63.9	53.7	39.1	49.1	36.5	67.9
GUEST NIGHTS ('000)													
2001													
December quarter	73.6	7.9	37.8	566.4	15.0	32.0	36.8	13.4	50.8	21.9	47.0	7.8	16.6
2002													
October	31.2	3.4	16.3	227.2	4.7	13.6	14.9	5.5	21.8	8.8	19.0	3.2	5.7
November	27.1	2.8	14.8	222.8	4.3	12.6	12.1	4.5	16.4	6.4	16.1	2.5	6.0
December	23.9	2.1	13.6	192.7	4.4	10.2	10.7	3.7	16.1	6.5	16.8	3.0	5.6
December quarter	82.2	8.3	44.7	642.6	13.5	36.4	37.7	13.6	54.3	21.7	52.0	8.7	17.4
GUEST ARRIVALS ('000)													
2001													
December quarter	48.7	5.4	23.0	240.7	6.5	21.4	24.5	8.8	33.9	16.1	30.3	5.0	8.8
2002													
October	21.1	2.1	9.4	88.8	2.1	8.5	10.3	3.3	13.5	6.5	12.6	2.1	3.0
November	18.1	1.7	8.5	87.8	2.0	8.1	7.9	2.9	11.1	4.5	9.8	1.8	2.9
December	16.3	1.3	7.6	79.0	2.0	6.7	7.2	2.4	10.8	4.8	11.6	2.0	2.3
December quarter	55.5	5.1	25.5	255.7	6.1	23.2	25.4	8.5	35.3	15.7	33.9	5.9	8.3
TAKINGS FROM ACCOMMODATION (\$'000)													
2001													
December quarter	3 322	310	1 604	39 436	781	1 610	1 511	655	2 071	1 093	2 294	299	830
2002													
October	1 417	136	628	16 920	243	780	643	271	972	451	883	127	331
November	1 302	112	596	16 958	252	769	542	224	720	361	798	102	335
December	1 093	77	537	12 705	228	589	459	181	691	321	751	105	290
December quarter	3 811	325	1 760	46 583	723	2 137	1 645	677	2 382	1 133	2 431	334	956

Period	South East	Goldfields	Midwest	Gascoyne	Pilbara	Kimberley	Perth	Peel	South West	Great Southern	Wheatbelt
ESTABLISHMENTS, CAPACITY AND EMPLOYMENT (number)											
December quarter 2001											
Establishments	10	23	25	10	18	28	100	7	58	20	22
Guest rooms	298	1 039	868	480	1 364	1 553	9 341	344	2 461	764	616
Bed spaces	903	2 763	2 378	1 278	2 854	4 500	25 723	1 243	7 444	2 264	1 509
Persons employed	135	422	350	156	452	542	5 682	166	1 290	311	230
December quarter 2002											
Establishments	10	22	24	12	18	29	99	7	60	21	23
Guest rooms	295	998	841	528	1 370	1 570	9 333	343	2 484	790	630
Bed spaces	880	2 622	2 316	1 464	2 838	4 470	26 013	1 192	7 465	2 364	1 594
Persons employed	119	387	355	205	484	579	5 600	182	1 280	324	238
ROOM NIGHTS OCCUPIED ('000)											
2001											
December quarter	15.2	44.4	35.7	18.6	60.5	51.5	554.3	15.1	119.7	32.5	20.1
2002											
October	5.4	17.9	16.2	8.0	22.7	27.1	206.1	5.1	41.4	12.2	8.6
November	4.9	15.6	12.9	6.3	20.2	17.7	204.4	4.9	39.1	10.6	6.7
December	4.3	12.4	11.2	6.3	17.2	15.7	203.8	5.3	38.5	10.7	5.1
December quarter	14.7	45.9	40.2	20.6	60.1	60.5	614.3	15.4	119.1	33.5	20.4
ROOM OCCUPANCY RATES (%)											
2001											
December quarter	55.4	46.4	44.7	42.2	48.2	36.0	64.5	47.6	52.9	46.2	35.5
2002											
October	59.6	57.8	62.0	48.6	53.4	55.8	71.2	48.1	53.8	49.7	44.0
November	55.9	52.2	51.0	39.7	49.2	39.2	73.0	47.8	52.4	44.7	35.3
December	47.3	40.0	42.8	38.6	40.6	33.6	70.4	50.1	50.1	43.7	27.0
December quarter	54.2	50.0	52.0	42.3	47.7	43.1	71.5	48.7	52.1	46.1	35.5
GUEST NIGHTS ('000)											
2001											
December quarter	26.6	62.3	61.4	32.1	78.4	94.6	947.9	37.0	261.1	55.2	29.3
2002											
October	9.1	25.9	26.1	13.9	27.7	51.5	341.8	12.4	89.2	20.7	12.7
November	8.0	21.1	20.0	9.7	24.1	30.6	335.5	12.4	81.9	17.0	9.7
December	8.4	19.2	18.1	11.0	20.6	30.3	365.4	14.9	90.3	19.8	7.4
December quarter	25.6	66.2	64.2	34.6	72.5	112.3	1 042.6	39.7	261.4	57.4	29.8
GUEST ARRIVALS ('000)											
2001											
December quarter	11.7	32.9	33.9	13.8	35.4	29.3	368.5	20.1	124.0	33.4	20.2
2002											
October	5.4	13.6	15.6	5.9	10.7	14.9	128.8	5.4	42.0	12.4	9.1
November	3.8	10.8	10.9	4.2	8.7	8.7	128.6	5.6	40.3	10.1	6.8
December	4.1	11.5	10.0	4.5	7.3	8.1	137.4	6.9	40.9	11.0	5.3
December quarter	13.3	36.0	36.6	14.7	26.7	31.7	394.8	17.9	123.1	33.6	21.2
TAKINGS FROM ACCOMMODATION (\$'000)											
2001											
December quarter	1 063	4 100	2 764	1 558	5 059	5 046	61 483	1 647	12 107	2 944	1 385
2002											
October	411	1 643	1 295	631	2 013	3 179	23 252	512	4 289	1 197	594
November	404	1 360	1 011	498	1 805	1 754	23 353	519	4 043	929	487
December	362	1 094	897	506	1 470	1 560	23 668	619	4 606	1 055	385
December quarter	1 177	4 097	3 203	1 635	5 288	6 493	70 274	1 650	12 938	3 181	1 466

Period	Greater Hobart	Southern (a)	East Coast (a)	Northern (a)	Greater Launceston	North West	West Coast
ESTABLISHMENTS, CAPACITY AND EMPLOYMENT (number)							
December quarter 2001							
Establishments	37	5	12	3	30	31	10
Guest rooms	2 154	144	448	n.p.	1 321	983	413
Bed spaces	5 962	420	1 582	n.p.	4 239	2 876	1 239
Persons employed	1 761	78	249	n.p.	1 044	520	216
December quarter 2002							
Establishments	43	6	13	4	31	33	10
Guest rooms	2 219	155	498	120	1 373	1 007	425
Bed spaces	6 019	493	1 705	451	4 341	2 950	1 211
Persons employed	1 791	84	315	50	1 062	569	258
ROOM NIGHTS OCCUPIED ('000)							
2001							
December quarter	128.8	5.2	17.6	n.p.	66.2	35.4	15.8
2002							
October	49.5	2.2	6.8	1.6	23.8	14.7	5.1
November	51.3	2.4	7.9	1.7	25.2	16.9	5.8
December	46.4	2.3	7.2	1.7	24.1	14.3	4.8
December quarter	147.2	6.9	21.9	5.0	73.1	45.9	15.7
ROOM OCCUPANCY RATES (%)							
2001							
December quarter	65.0	39.4	42.6	n.p.	54.5	39.1	41.6
2002							
October	72.0	45.4	44.1	43.3	56.0	46.9	38.8
November	77.0	51.0	52.7	46.7	61.2	56.0	45.2
December	67.4	47.8	46.6	46.9	56.6	45.9	36.5
December quarter	72.1	48.0	47.8	45.6	57.9	49.6	40.1
GUEST NIGHTS ('000)							
2001							
December quarter	224.4	10.6	35.3	n.p.	120.5	61.1	29.2
2002							
October	83.0	5.0	13.8	3.6	42.7	24.1	9.1
November	86.6	5.4	15.8	4.2	43.5	27.3	10.0
December	84.8	5.4	15.4	4.9	46.1	26.2	9.2
December quarter	254.5	15.8	45.0	12.7	132.3	77.5	28.2
GUEST ARRIVALS ('000)							
2001							
December quarter	90.2	8.8	25.7	n.p.	66.9	37.7	25.5
2002							
October	32.4	3.5	9.9	2.1	23.8	14.9	6.2
November	36.1	3.7	11.7	2.5	26.0	16.3	6.7
December	34.8	3.4	10.7	3.0	25.7	14.8	6.0
December quarter	103.3	10.5	32.3	7.6	75.5	46.0	18.9
TAKINGS FROM ACCOMMODATION (\$'000)							
2001							
December quarter	13 533	438	1 783	n.p.	6 031	3 533	1 319
2002							
October	5 245	194	667	140	2 191	1 335	425
November	5 238	211	812	147	2 311	1 582	458
December	4 861	193	847	146	2 355	1 426	428
December quarter	15 344	599	2 325	432	6 858	4 343	1 310

(a) Changes in the Statistical Local Areas making up these Tourism Regions have resulted in changes to previously published figures.

Period	Darwin	Kakadu	Arnhem	Katherine	Tablelands	Petermann	Alice Springs	MacDonnell	Daly	Canberra
ESTABLISHMENTS, CAPACITY AND EMPLOYMENT (number)										
December quarter 2001										
Establishments	34	4	3	10	6	7	22	2	1	62
Guest rooms	2 602	n.p.	83	547	n.p.	n.p.	1 614	n.p.	n.p.	5 270
Bed spaces	7 648	n.p.	280	1 541	n.p.	n.p.	4 854	n.p.	n.p.	15 592
Persons employed	1 277	n.p.	51	184	n.p.	n.p.	732	n.p.	n.p.	2 485
December quarter 2002										
Establishments	35	4	3	9	6	8	22	1	—	59
Guest rooms	2 652	n.p.	82	513	n.p.	n.p.	1 706	n.p.	—	5 041
Bed spaces	7 829	n.p.	280	1 419	n.p.	n.p.	5 119	n.p.	—	14 920
Persons employed	1 263	n.p.	42	163	n.p.	n.p.	760	n.p.	—	2 153
ROOM NIGHTS OCCUPIED ('000)										
2001										
December quarter	133.9	n.p.	2.4	19.3	n.p.	n.p.	75.9	n.p.	n.p.	278.1
2002										
October	51.3	n.p.	1.0	7.5	n.p.	n.p.	35.5	n.p.	—	116.6
November	44.0	n.p.	0.9	5.3	n.p.	n.p.	30.7	n.p.	—	98.2
December	35.1	n.p.	0.5	4.1	n.p.	n.p.	20.3	n.p.	—	84.8
December quarter	130.4	n.p.	2.3	16.9	n.p.	n.p.	86.5	n.p.	—	299.5
ROOM OCCUPANCY RATES (%)										
2001										
December quarter	56.0	n.p.	31.4	38.3	n.p.	n.p.	51.1	n.p.	n.p.	57.4
2002										
October	62.3	n.p.	37.6	47.4	n.p.	n.p.	67.0	n.p.	—	74.6
November	55.3	n.p.	35.8	34.6	n.p.	n.p.	60.1	n.p.	—	64.9
December	42.7	n.p.	27.0	25.6	n.p.	n.p.	38.4	n.p.	—	54.2
December quarter	53.4	n.p.	34.1	35.9	n.p.	n.p.	55.1	n.p.	—	64.6
GUEST NIGHTS ('000)										
2001										
December quarter	217.2	n.p.	3.9	36.0	n.p.	n.p.	127.9	n.p.	n.p.	477.7
2002										
October	82.0	n.p.	1.7	13.5	n.p.	n.p.	62.8	n.p.	—	205.8
November	68.0	n.p.	1.5	9.9	n.p.	n.p.	48.9	n.p.	—	161.3
December	59.3	n.p.	0.9	10.1	n.p.	n.p.	34.2	n.p.	—	146.7
December quarter	209.2	n.p.	4.2	33.5	n.p.	n.p.	145.9	n.p.	—	513.8
GUEST ARRIVALS ('000)										
2001										
December quarter	100.9	n.p.	1.7	24.8	n.p.	n.p.	68.1	n.p.	n.p.	197.2
2002										
October	35.6	n.p.	0.7	9.2	n.p.	n.p.	30.1	n.p.	—	77.7
November	30.8	n.p.	0.6	7.0	n.p.	n.p.	24.3	n.p.	—	65.5
December	24.5	n.p.	0.4	7.1	n.p.	n.p.	16.9	n.p.	—	56.0
December quarter	90.8	n.p.	1.7	23.4	n.p.	n.p.	71.3	n.p.	—	199.2
TAKINGS FROM ACCOMMODATION (\$'000)										
2001										
December quarter	13 127	n.p.	360	1 356	n.p.	n.p.	6 201	n.p.	n.p.	29 785
2002										
October	4 996	n.p.	182	534	n.p.	n.p.	3 180	n.p.	—	13 516
November	4 308	n.p.	186	377	n.p.	n.p.	2 760	n.p.	—	10 772
December	3 323	n.p.	67	280	n.p.	n.p.	1 640	n.p.	—	9 494
December quarter	12 627	n.p.	435	1 191	n.p.	n.p.	7 580	n.p.	—	33 782

NOTE!

Revised data for
September quarter 2002.
See "Data Revision"
note on page 2.

STAR GRADING

Period	Licensed hotels with facilities	Motels and guest houses	Serviced apartments	STAR GRADING					Ungraded	Total
				1	2	3	4	5		
ESTABLISHMENTS, CAPACITY AND EMPLOYMENT (number)										
September quarter 2001										
Establishments	776	2 394	646	61	455	1 867	903	98	432	3 816
Guest rooms	78 241	84 021	34 467	1 962	13 280	71 330	71 687	23 552	14 918	196 729
Bed spaces	205 546	246 834	114 391	6 315	39 027	211 414	206 584	59 879	43 552	566 771
Persons employed	71 620	29 740	11 459	831	5 269	27 098	38 889	34 678	6 054	112 819
September quarter 2002										
Establishments	780	2 388	675	62	449	1 848	952	109	423	3 843
Guest rooms	77 603	83 592	35 610	2 207	13 305	69 176	72 721	24 670	14 726	196 805
Bed spaces	203 531	244 527	117 523	6 991	39 335	203 724	208 493	63 775	43 263	565 581
Persons employed	69 923	29 459	12 141	803	5 245	26 035	38 382	34 316	6 742	111 523
ROOM NIGHTS OCCUPIED ('000)										
2001										
September quarter	4 506.3	4 112.6	2 000.1	77.8	542.0	3 612.0	4 262.7	1 434.2	690.4	10 619.0
2002										
July	1 457.9	1 402.9	727.6	32.1	200.5	1 171.5	1 459.8	481.1	243.3	3 588.3
August	1 544.6	1 360.8	717.1	34.3	188.7	1 147.1	1 491.5	521.3	239.7	3 622.5
September	1 467.5	1 389.0	711.1	28.4	189.1	1 168.3	1 459.8	487.6	234.4	3 567.6
September quarter	4 469.9	4 152.8	2 155.7	94.8	578.3	3 486.9	4 411.1	1 490.0	717.3	10 778.4
ROOM OCCUPANCY RATES (%)										
2001										
September quarter	62.6	53.2	63.1	43.1	44.4	55.0	64.6	66.2	50.4	58.7
2002										
July	60.7	54.2	66.2	46.9	48.8	54.6	64.8	62.9	54.0	58.9
August	64.3	52.5	65.0	50.1	45.9	53.5	66.3	68.2	52.6	59.4
September	63.2	55.4	66.6	42.9	47.4	56.3	67.0	65.9	53.1	60.5
September quarter	62.7	54.0	65.9	46.7	47.4	54.8	66.0	65.6	53.3	59.6
GUEST NIGHTS ('000)										
2001										
September quarter	7 508.5	7 312.8	4 360.8	160.0	978.3	6 725.0	7 633.7	2 375.1	1 310.1	19 182.2
2002										
July	2 471.2	2 518.2	1 620.2	69.6	364.6	2 204.5	2 678.5	813.5	478.8	6 609.6
August	2 560.5	2 348.5	1 510.9	75.9	327.7	2 069.8	2 629.4	857.3	459.8	6 419.9
September	2 407.3	2 444.6	1 542.4	52.5	339.8	2 139.5	2 604.2	806.1	452.2	6 394.3
September quarter	7 438.9	7 311.3	4 673.5	198.0	1 032.2	6 413.8	7 912.1	2 476.9	1 390.8	19 423.8
BED OCCUPANCY RATES (%)										
2001										
September quarter	39.7	32.2	41.4	27.5	27.3	34.6	40.2	43.1	32.7	36.8
2002										
July	39.2	33.3	44.6	32.1	30.0	34.9	41.5	41.1	36.1	37.8
August	40.7	31.0	41.5	35.0	27.0	32.8	40.8	43.4	34.4	36.7
September	39.5	33.3	43.8	25.0	28.8	35.0	41.7	42.1	34.9	37.7
September quarter	39.8	32.5	43.3	30.8	28.6	34.2	41.3	42.2	35.1	37.4

(a) Comprising establishments with 15 or more rooms or units. See Explanatory Notes, paragraph 7.

NOTE!
Revised data for
September quarter 2002.
See 'Data Revision'
note on page 2.

STAR GRADING

	Licensed hotels with facilities	Motels and guest houses	Serviced apartments	STAR GRADING						Ungraded	Total
				1	2	3	4	5			
GUEST ARRIVALS ('000)											
2001											
September quarter	3 175.5	4 076.2	1 175.5	73.3	563.6	3 333.4	3 067.8	908.8	480.2	8 427.1	
2002											
July	1 057.4	1 417.8	422.1	36.9	205.7	1 123.1	1 047.8	312.7	171.1	2 897.3	
August	1 111.0	1 328.4	408.1	36.5	187.2	1 058.6	1 062.6	332.9	169.7	2 847.5	
September	1 049.3	1 396.9	427.4	31.2	193.0	1 114.8	1 052.1	313.8	168.8	2 873.7	
September quarter	3 217.7	4 143.1	1 257.7	104.7	585.9	3 296.5	3 162.4	959.4	509.6	8 618.5	
AVERAGE LENGTH OF STAY (days)											
2001											
September quarter	2.4	1.8	3.7	2.2	1.7	2.0	2.5	2.6	2.7	2.3	
2002											
September quarter	2.3	1.8	3.7	1.9	1.8	1.9	2.5	2.6	2.7	2.3	
TAKINGS FROM ACCOMMODATION (\$'000)											
2001											
September quarter	628 608	365 585	232 329	5 976	37 033	325 534	523 271	266 745	67 963	1 226 522	
2002											
July	196 816	126 089	86 234	2 502	13 698	106 834	176 825	84 270	25 009	409 139	
August	213 014	123 024	85 126	2 906	12 944	105 073	181 619	93 149	25 472	421 164	
September	199 197	122 543	84 826	1 887	12 757	103 650	177 694	87 647	22 931	406 567	
September quarter	609 027	371 657	256 186	7 295	39 400	315 557	536 139	265 067	73 412	1 236 869	
AVERAGE TAKINGS PER ROOM NIGHT OCCUPIED (\$)											
2001											
September quarter	139.5	88.9	116.2	76.8	68.3	90.1	122.8	186.0	98.4	115.5	
2002											
July	135.0	89.9	118.5	78.0	68.3	91.2	121.1	175.2	102.8	114.0	
August	137.9	90.4	118.7	84.8	68.6	91.6	121.8	178.7	106.3	116.3	
September	135.7	88.2	119.3	66.5	67.4	88.7	121.7	179.8	97.8	114.0	
September quarter	136.3	89.5	118.8	77.0	68.1	90.5	121.5	177.9	102.3	114.8	
AVERAGE TAKINGS PER AVAILABLE ROOM NIGHT (\$)											
2001											
September quarter	87.3	47.3	73.3	33.1	30.3	49.6	79.3	123.1	49.6	67.8	
2002											
July	81.9	48.7	78.4	36.6	33.3	49.8	78.5	110.2	55.5	67.2	
August	88.7	47.5	77.2	42.5	31.5	49.0	80.7	121.8	55.9	69.1	
September	85.7	48.9	79.4	28.5	32.0	50.0	81.5	118.4	52.0	68.9	
September quarter	85.5	48.4	78.3	35.9	32.3	49.6	80.2	116.8	54.5	68.4	

(a) Comprising establishments with 15 or more rooms or units. See Explanatory Notes, paragraph 7.

NOTE!

Revised data for
September quarter 2002.
See 'Data Revision'
note on page 2.

STAR GRADING

Period	Licensed hotels with facilities	Motels and guest houses	Serviced apartments	1	2	3	4	5	Ungraded	Total
ESTABLISHMENTS, CAPACITY AND EMPLOYMENT (number)										
September quarter 2001										
Establishments	199	991	134	30	177	707	221	26	163	1 324
Guest rooms	25 028	32 787	7 600	1 145	5 139	25 882	21 107	6 876	5 266	65 415
Bed spaces	61 871	96 848	24 502	4 137	15 120	75 527	57 447	15 209	15 781	183 221
Persons employed	20 494	11 465	2 709	384	1 751	9 022	12 119	9 516	1 876	34 668
September quarter 2002										
Establishments	195	985	132	31	179	693	233	25	151	1 312
Guest rooms	23 750	32 261	7 477	1 214	5 230	24 591	20 915	6 701	4 837	63 488
Bed spaces	58 738	95 115	23 738	4 340	15 485	71 247	56 733	15 162	14 624	177 591
Persons employed	19 618	11 147	2 757	365	1 743	8 444	11 850	9 180	1 940	33 522
ROOM NIGHTS OCCUPIED ('000)										
2001										
September quarter	1 481.2	1 540.3	407.7	47.2	218.3	1 298.4	1 250.6	398.8	215.9	3 429.2
2002										
July	467.0	528.7	148.6	17.9	79.5	416.4	429.0	121.0	80.5	1 144.3
August	492.0	505.7	144.5	19.8	74.7	403.6	428.2	138.9	77.0	1 142.2
September	449.7	531.4	142.3	13.8	77.2	415.9	418.0	126.5	71.9	1 123.4
September quarter	1 408.7	1 565.9	435.3	51.5	231.4	1 235.9	1 275.3	386.4	229.4	3 409.9
ROOM OCCUPANCY RATES (%)										
2001										
September quarter	64.4	51.1	58.3	44.8	46.2	54.5	64.4	63.0	44.7	57.0
2002										
July	63.4	52.9	64.1	47.6	49.0	54.6	66.2	58.2	53.7	58.1
August	67.0	50.6	62.3	52.5	46.1	52.9	66.3	66.9	51.4	58.1
September	63.4	54.9	63.4	38.0	49.4	56.4	66.9	62.9	49.6	59.1
September quarter	64.6	52.8	63.3	46.1	48.1	54.6	66.4	62.7	51.6	58.4
GUEST NIGHTS ('000)										
2001										
September quarter	2 468.5	2 763.8	814.9	108.4	400.4	2 396.3	2 083.8	640.4	417.9	6 047.2
2002										
July	787.4	972.9	316.0	45.1	147.8	782.5	738.1	195.3	167.4	2 076.3
August	828.4	883.0	290.6	50.8	130.6	720.2	717.0	224.1	159.3	2 002.0
September	715.9	950.1	286.0	27.5	138.0	752.1	694.2	197.9	142.3	1 952.0
September quarter	2 331.6	2 806.0	892.6	123.3	416.4	2 254.8	2 149.4	617.3	469.0	6 030.2
BED OCCUPANCY RATES (%)										
2001										
September quarter	43.4	31.0	36.1	28.5	28.8	34.5	39.4	45.8	28.9	35.9
2002										
July	43.2	33.0	42.9	33.5	30.8	35.4	42.0	41.6	36.9	37.7
August	45.7	29.9	39.5	37.7	27.2	32.6	40.9	47.7	35.1	36.4
September	40.8	33.3	40.2	21.1	29.8	35.2	41.0	43.5	32.4	36.7
September quarter	43.3	32.1	40.9	30.9	29.3	34.4	41.3	44.3	34.9	36.9

(a) Comprising establishments with 15 or more rooms or units. See Explanatory Notes, paragraph 7.

NOTE!
Revised data for
September quarter 2002.
See 'Data Revision'
note on page 2.

STAR GRADING

Period	Licensed hotels with facilities	Motels and guest houses	Serviced apartments	STAR GRADING						Ungraded	Total
				1	2	3	4	5			
GUEST ARRIVALS ('000)											
2001											
September quarter	960.1	1 673.9	253.5	44.1	239.4	1 306.4	898.8	231.3	167.3	2 887.5	
2002											
July	329.1	603.9	100.3	20.6	89.5	449.8	322.2	85.4	65.7	1 033.3	
August	343.9	550.5	93.5	19.9	80.4	413.7	315.6	95.8	62.4	987.8	
September	310.1	594.8	96.7	15.1	85.1	443.0	313.5	86.3	58.6	1 001.6	
September quarter	983.0	1 749.2	290.4	55.6	255.0	1 306.5	951.2	267.6	186.7	3 022.6	
AVERAGE LENGTH OF STAY (days)											
2001											
September quarter	2.6	1.7	3.2	2.5	1.7	1.8	2.3	2.8	2.5	2.1	
2002											
September quarter	2.4	1.6	3.1	2.2	1.6	1.7	2.3	2.3	2.5	2.0	
TAKINGS FROM ACCOMMODATION (\$'000)											
2001											
September quarter	230 109	140 699	57 846	4 140	15 144	122 323	170 458	92 830	23 759	428 654	
2002											
July	69 278	48 805	20 571	1 713	5 527	39 533	57 474	24 779	9 628	138 655	
August	74 376	46 956	20 326	2 084	5 259	38 530	57 398	28 447	9 940	141 658	
September	66 245	47 885	19 587	1 055	5 149	37 962	55 965	26 204	7 382	133 717	
September quarter	209 899	143 646	60 485	4 852	15 935	116 025	170 838	79 430	26 950	414 030	
AVERAGE TAKINGS PER ROOM NIGHT OCCUPIED (\$)											
2001											
September quarter	155.4	91.3	141.9	87.7	69.4	94.2	136.3	232.8	110.0	125.0	
2002											
July	148.4	92.3	138.4	95.7	69.5	94.9	134.0	204.8	119.7	121.2	
August	151.2	92.9	140.7	105.4	70.4	95.5	134.0	204.8	129.0	124.0	
September	147.3	90.1	137.7	76.3	66.7	91.3	133.9	207.2	102.6	119.0	
September quarter	149.0	91.7	138.9	94.2	68.9	93.9	134.0	205.6	117.5	121.4	
AVERAGE TAKINGS PER AVAILABLE ROOM NIGHT (\$)											
2001											
September quarter	100.0	46.6	82.7	39.3	32.0	51.4	87.8	146.7	49.2	71.2	
2002											
July	94.1	48.8	88.8	45.5	34.1	51.9	88.6	119.3	64.2	70.4	
August	101.4	47.0	87.7	55.4	32.4	50.5	88.9	136.9	66.3	72.1	
September	93.3	49.5	87.3	29.0	32.9	51.5	89.5	130.4	50.9	70.3	
September quarter	96.3	48.4	87.9	43.4	33.2	51.3	89.0	128.8	60.6	70.9	

(a) Comprising establishments with 15 or more rooms or units. See Explanatory Notes, paragraph 7.

NOTE!

Revised data for
September quarter 2002.
See "Data Revision"
note on page 2.

Period	STAR GRADING							Total
	Licensed hotels with facilities	Motels and guest houses	Serviced apartments	1 and ungraded	2	3	4 and 5	
ESTABLISHMENTS, CAPACITY AND EMPLOYMENT (number)								
September quarter 2001								
Establishments	52	50	25	9	15	71	32	127
Guest rooms	2 847	1 671	910	211	467	2 626	2 124	5 428
Bed spaces	7 796	5 156	3 214	682	1 168	8 038	6 278	16 166
Persons employed	2 627	647	422	189	168	1 192	2 147	3 696
September quarter 2002								
Establishments	54	54	31	17	13	74	35	139
Guest rooms	2 863	1 716	1 125	472	409	2 654	2 169	5 704
Bed spaces	7 864	5 243	3 914	1 493	1 140	8 139	6 249	17 021
Persons employed	2 448	886	492	416	176	1 326	1 908	3 826
ROOM NIGHTS OCCUPIED ('000)								
2001								
September quarter	97.8	55.2	37.9	6.3	9.3	75.7	99.7	190.9
2002								
July	33.3	19.5	13.8	4.7	3.5	25.3	33.0	66.5
August	32.4	18.3	13.8	4.2	3.5	24.3	32.5	64.5
September	35.5	22.4	18.6	5.4	3.6	31.9	35.6	76.5
September quarter	101.1	60.2	46.2	14.4	10.6	81.5	101.0	207.5
ROOM OCCUPANCY RATES (%)								
2001								
September quarter	37.4	36.0	45.3	32.4	21.8	31.3	51.0	38.3
2002								
July	37.7	36.6	39.5	32.4	28.5	30.8	49.1	37.7
August	36.5	34.4	39.6	28.9	28.4	29.5	48.3	36.5
September	41.3	43.5	55.2	38.1	29.4	40.1	54.7	44.7
September quarter	38.5	38.1	44.6	33.1	28.8	33.4	50.6	39.6
GUEST NIGHTS ('000)								
2001								
September quarter	151.5	100.5	76.5	15.3	12.8	143.9	156.5	328.5
2002								
July	48.6	33.5	28.5	9.1	4.8	47.0	49.5	110.6
August	47.5	31.7	27.1	8.4	5.5	44.0	48.3	106.2
September	56.8	42.1	41.8	12.0	6.7	64.5	57.5	140.7
September quarter	152.9	107.3	97.3	29.5	17.0	155.6	155.4	357.5
BED OCCUPANCY RATES (%)								
2001								
September quarter	21.1	21.2	25.9	24.3	12.0	19.5	27.1	22.1
2002								
July	20.1	20.6	23.5	19.8	14.4	18.6	25.6	21.0
August	19.5	19.5	22.3	18.0	15.9	17.4	24.9	20.1
September	24.1	26.8	35.6	26.9	19.5	26.4	30.7	27.6
September quarter	21.2	22.2	27.0	21.5	16.6	20.8	27.0	22.9

(a) Comprising establishments with 15 or more rooms or units. See Explanatory Notes, paragraph 7.

NOTE!
Revised data for
September quarter 2002.
See 'Data Revision'
note on page 2.

Period	STAR GRADING							
	Licensed hotels with facilities	Motels and guest houses	Serviced apartments	1 and ungraded	2	3	4 and 5	Total
GUEST ARRIVALS ('000)								
2001								
September quarter	82.1	53.4	28.2	5.9	7.1	78.0	72.7	163.7
2002								
July	26.6	18.7	11.1	4.1	2.7	25.7	23.8	56.4
August	25.6	18.0	11.2	4.2	3.2	24.8	22.7	54.8
September	31.9	23.1	16.3	5.7	3.8	35.9	26.0	71.3
September quarter	84.2	59.8	38.6	14.0	9.7	86.4	72.5	182.6
AVERAGE LENGTH OF STAY (days)								
2001								
September quarter	1.8	1.9	2.7	2.6	1.8	1.8	2.2	2.0
2002								
September quarter	1.8	1.8	2.5	2.1	1.8	1.8	2.1	2.0
TAKINGS FROM ACCOMMODATION (\$'000)								
2001								
September quarter	9 170	4 595	4 161	544	490	5 836	11 056	17 926
2002								
July	2 959	1 681	1 510	379	193	1 969	3 608	6 149
August	2 911	1 599	1 467	354	200	1 839	3 583	5 976
September	3 234	1 959	1 958	481	199	2 501	3 970	7 151
September quarter	9 103	5 239	4 934	1 215	591	6 310	11 161	19 276
AVERAGE TAKINGS PER ROOM NIGHT OCCUPIED (\$)								
2001								
September quarter	93.7	83.2	109.8	86.4	52.7	77.1	110.9	93.9
2002								
July	89.0	86.3	109.7	80.1	55.7	77.8	109.4	92.5
August	90.0	87.2	106.2	83.7	56.4	75.8	110.4	92.7
September	91.1	87.5	105.1	89.1	55.1	78.4	111.6	93.5
September quarter	90.0	87.0	106.8	84.5	55.7	77.4	110.5	92.9
AVERAGE TAKINGS PER AVAILABLE ROOM NIGHT (\$)								
2001								
September quarter	35.0	30.0	49.7	28.0	11.5	24.2	56.6	35.9
2002								
July	33.5	31.6	43.3	25.9	15.9	23.9	53.7	34.9
August	32.9	30.1	42.1	24.2	16.0	22.4	53.3	33.8
September	37.6	38.1	58.0	34.0	16.2	31.4	61.0	41.8
September quarter	34.7	33.2	47.7	28.0	16.0	25.8	55.9	36.8

(a) Comprising establishments with 15 or more rooms or units. See Explanatory Notes, paragraph 7.

NOTE!
Revised data for
September quarter 2002.
See 'Data Revision'
note on page 2.

Period	STAR GRADING							
	Licensed hotels with facilities	Motels and guest houses	Serviced apartments	1 and ungraded	2	3	4 and 5	Total
ESTABLISHMENTS, CAPACITY AND EMPLOYMENT (number)								
September quarter 2001								
Establishments	15	25	20	8	7	21	24	60
Guest rooms	1 906	1 685	1 522	367	479	1 485	2 782	5 113
Bed spaces	4 834	5 171	5 083	1 165	1 557	4 583	7 783	15 088
Persons employed	1 231	581	428	97	92	533	1 518	2 240
September quarter 2002								
Establishments	14	27	19	9	7	20	24	60
Guest rooms	1 861	1 852	1 443	464	446	1 437	2 809	5 156
Bed spaces	4 572	5 730	4 812	1 407	1 434	4 436	7 837	15 114
Persons employed	1 178	676	440	130	100	551	1 513	2 294
ROOM NIGHTS OCCUPIED ('000)								
2001								
September quarter	113.2	89.2	91.1	19.4	23.4	77.4	173.2	293.4
2002								
July	33.3	29.7	30.2	8.6	7.8	22.6	54.2	93.2
August	39.7	31.7	28.3	8.5	6.6	24.6	60.1	99.7
September	36.4	34.9	29.3	9.5	8.4	26.6	56.2	100.6
September quarter	109.4	96.2	87.8	26.5	22.8	73.7	170.5	293.5
ROOM OCCUPANCY RATES (%)								
2001								
September quarter	64.5	57.5	65.1	57.5	53.1	56.7	67.7	62.4
2002								
July	57.8	51.7	67.4	59.9	56.4	50.7	62.2	58.3
August	68.8	55.2	63.3	58.8	47.9	55.1	69.0	62.4
September	65.2	62.8	67.7	68.0	62.5	61.6	66.7	65.0
September quarter	63.9	56.5	66.1	62.1	55.5	55.7	66.0	61.9
GUEST NIGHTS ('000)								
2001								
September quarter	173.3	167.9	172.0	41.3	53.1	146.6	272.3	513.2
2002								
July	53.0	55.8	61.6	17.1	16.8	45.9	90.8	170.5
August	58.4	57.9	53.3	16.4	14.3	46.1	92.9	169.6
September	53.7	68.2	58.3	19.1	18.9	51.5	90.6	180.1
September quarter	165.1	181.9	173.2	52.6	49.9	143.5	274.2	520.3
BED OCCUPANCY RATES (%)								
2001								
September quarter	39.0	35.3	36.8	38.6	37.0	34.8	38.0	37.0
2002								
July	37.4	31.4	41.3	39.1	37.7	33.4	37.4	36.4
August	41.2	32.6	35.7	37.6	32.1	33.5	38.2	36.2
September	39.1	39.7	40.4	45.3	43.9	38.7	38.5	39.7
September quarter	39.3	34.5	39.1	40.6	37.8	35.2	38.0	37.4

(a) Comprising establishments with 15 or more rooms or units. See Explanatory Notes, paragraph 7.

Period	STAR GRADING								Total
	Licensed hotels with facilities	Motels and guest houses	Serviced apartments	1 and ungraded	2	3	4 and 5		
GUEST ARRIVALS ('000)									
2001									
September quarter	93.7	92.6	46.4	13.8	17.9	63.6	137.3	232.7	
2002									
July	25.9	25.7	15.6	7.0	6.4	19.9	34.0	67.2	
August	30.9	26.4	15.1	7.9	5.9	19.7	39.0	72.4	
September	29.3	30.0	14.6	8.3	7.7	22.2	35.8	73.9	
September quarter	86.1	82.1	45.4	23.2	19.9	61.7	108.7	213.5	
AVERAGE LENGTH OF STAY (days)									
2001									
September quarter	1.8	1.8	3.7	3.0	3.0	2.3	2.0	2.2	
2002									
September quarter	1.9	2.2	3.8	2.3	2.5	2.3	2.5	2.4	
TAKINGS FROM ACCOMMODATION (\$'000)									
2001									
September quarter	14 700	7 469	9 877	1 600	1 567	6 409	22 470	32 045	
2002									
July	3 979	2 479	3 458	668	488	2 106	6 654	9 916	
August	4 985	2 620	3 269	631	442	2 228	7 573	10 874	
September	4 481	2 891	3 384	721	536	2 436	7 063	10 756	
September quarter	13 445	7 990	10 111	2 020	1 466	6 769	21 290	31 546	
AVERAGE TAKINGS PER ROOM NIGHT OCCUPIED (\$)									
2001									
September quarter	129.9	83.8	108.4	82.4	66.9	82.8	129.7	109.2	
2002									
July	119.3	83.6	114.7	77.6	62.6	93.3	122.8	106.4	
August	125.6	82.7	115.4	74.6	66.7	90.7	126.1	109.1	
September	123.1	82.9	115.5	76.2	64.1	91.7	125.7	106.9	
September quarter	122.9	83.0	115.1	76.2	64.4	91.9	124.9	107.5	
AVERAGE TAKINGS PER AVAILABLE ROOM NIGHT (\$)									
2001									
September quarter	83.8	48.2	70.5	47.4	35.6	46.9	87.8	68.1	
2002									
July	69.0	43.2	77.3	46.5	35.3	47.3	76.4	62.0	
August	86.4	45.6	73.1	43.8	32.0	50.0	87.0	68.0	
September	80.3	52.0	78.2	51.8	40.0	56.5	83.8	69.5	
September quarter	78.5	46.9	76.2	47.3	35.7	51.2	82.4	66.5	

(a) Comprising establishments with 15 or more rooms or units. See Explanatory Notes, paragraph 7.

NOTE!
Revised data for
September quarter 2002.
See "Data Revision"
note on page 2.

Period	Capital Country NSW	Hunter NSW	Greater Launceston Tas.	Canberra ACT
ESTABLISHMENTS, CAPACITY AND EMPLOYMENT (number)				
September quarter 2001				
Establishments	68	100	30	60
Guest rooms	2 132	3 856	1 323	5 113
Bed spaces	6 209	12 028	4 238	15 088
Persons employed	866	2 128	1 033	2 240
September quarter 2002				
Establishments	67	101	31	60
Guest rooms	2 126	4 018	1 373	5 156
Bed spaces	6 112	12 498	4 335	15 114
Persons employed	920	2 315	1 049	2 294
ROOM NIGHTS OCCUPIED ('000)				
2001				
September quarter	100.7	174.8	44.8	293.4
2002				
July	32.9	68.4	17.5	93.2
August	31.2	64.5	16.2	99.7
September	33.2	67.7	19.4	100.6
September quarter	97.3	200.6	53.0	293.5
ROOM OCCUPANCY RATES (%)				
2001				
September quarter	51.4	49.3	36.8	62.4
2002				
July	49.9	54.9	41.1	58.3
August	47.4	51.8	37.9	62.4
September	52.0	56.1	47.0	65.0
September quarter	49.7	54.3	42.0	61.9
GUEST NIGHTS ('000)				
2001				
September quarter	186.3	317.9	79.4	513.2
2002				
July	61.6	128.5	29.1	170.5
August	55.9	113.2	25.8	169.6
September	59.1	121.4	36.0	180.1
September quarter	176.6	363.1	90.9	520.3
GUEST ARRIVALS ('000)				
2001				
September quarter	119.3	181.4	43.2	232.7
2002				
July	42.4	69.9	15.0	67.2
August	38.9	63.5	14.0	72.4
September	40.7	68.8	18.4	73.9
September quarter	122.0	202.2	47.4	213.5
TAKINGS FROM ACCOMMODATION (\$'000)				
2001				
September quarter	9 035	19 586	3 964	32 045
2002				
July	3 192	7 793	1 533	9 916
August	3 051	7 435	1 401	10 874
September	3 143	7 623	1 717	10 756
September quarter	9 385	22 851	4 650	31 546

EXPLANATORY NOTES

INTRODUCTION

- 1** This publication contains data from the ABS quarterly Survey of Tourist Accommodation (STA). The STA is a mailout collection that completely enumerates all in-scope accommodation establishments.
- 2** From the March quarter 1998, the scope and collection strategy for the STA was changed to include only significant accommodation establishments (these are defined below).

SCOPE

- 3** On a quarterly basis, the STA includes hotels, resorts, motels, guest houses and serviced apartments with 15 or more rooms or units.
- 4** Every third year beginning with 2000, the STA expands to also include:
 - holiday flats, units and houses of letting entities with 15 or more rooms or units;
 - caravan parks with 40 or more powered sites;
 - visitor hostels with 25 or more bed spaces.
- 5** The short-term non-residential accommodation which is in scope of the STA is accommodation which is not leased, and which is provided to guests who would generally stay for periods of less than two months.
- 6** Some establishments also provide long-term residential accommodation. For hotels, motels, guest houses and serviced apartments, the amount of such activity is considered to be insignificant and is included in the data presented in this publication.

DEFINITIONS OF ACCOMMODATION ESTABLISHMENTS

- 7** The STA includes the following categories of establishments which provide predominantly short-term non-residential accommodation to the general public:
 - hotels and resorts with facilities - establishments with 15 or more rooms which are licensed to operate a public bar and which provide accommodation on a room/suite basis, with a bath/shower and toilet in most guest rooms, but which do not have full cooking facilities (i.e. hot plates and oven/microwave) in most guest rooms;
 - motels, private hotels and guest houses with facilities - establishments with 15 or more rooms which are not licensed to operate a public bar, and which provide accommodation on a room/suite basis, with a bath/shower and toilet in most guest rooms, but which do not have full cooking facilities (i.e. hot plates and oven/microwave) in most guest rooms;
 - serviced apartments - establishments with 15 or more units which mostly comprise self-contained units at the same location, and which are available on a unit/apartment basis to the general public for a minimum of one night; the units should have full cooking facilities (i.e. hot plates and oven/microwave), refrigerator and bath/shower and toilet facilities; all bed linen and towels should be provided, and daily servicing (i.e. cleaning and bed making) must be available through the on-site management, although this service need not necessarily be used.

EXPLANATORY NOTES *continued*

CLASSIFICATION CHANGES	<p>8 As a result of the separate classification of serviced apartments from the March quarter 1998, there have been several changes to definitions of accommodation units. Some units, which were formerly in categories such as hotels, motels or holiday flats, units and houses are now classified as serviced apartments. A small number of establishments which were previously classified as motels have been reclassified as holiday flats, units and houses and are therefore no longer in scope of the quarterly STA, except as described in paragraph 4.</p>
COVERAGE	<p>9 Coverage is comprehensive and from the September quarter 1999, is obtained from AAA Tourism, supplied as an electronic file, which is updated quarterly. This is supplemented by notification of new tourism developments and their likely opening dates in selected guides, major tourism journals and periodicals and newspapers. Periodic comparison with lists of accommodation establishments provided by the various tourism commissions and industry associations is also undertaken.</p>
DATA QUALITY	<p>10 The survey does not have a sample component and the data are not subject to sampling variability. However, other inaccuracies collectively referred to as non-sampling error may affect the data. These non-sampling errors may arise from a number of sources, including:</p> <ul style="list-style-type: none">▪ errors in the reporting of data by respondents;▪ errors in the process of capturing data;▪ estimation for missing data; and▪ definition and classification errors. <p>Every effort has been made to reduce non-sampling error to a minimum by careful design and testing of questionnaires, and efficient operating procedures and systems used to compile statistics.</p> <p>11 The December quarter 2002 response rates were:</p> <ul style="list-style-type: none">▪ 94% licensed hotels▪ 92% motels and guest houses▪ 95% serviced apartments
TAKINGS FROM ACCOMMODATION	<p>12 From 1 July 2000, takings from accommodation include gross revenue from the provision of accommodation, including GST. Takings from meals are excluded. Where businesses are unable to provide the data inclusive of GST, it is automatically adjusted by the ABS prior to aggregation and release in output.</p>

EXPLANATORY NOTES *continued*

REGIONAL DATA

13 Survey results are aggregated to tourism regions as defined by relevant state and territory tourist commissions or equivalent organisations. Tourism regions are reviewed annually and are subject to boundary and name changes. Where changes have occurred care should be taken when making comparisons with previously published data at this level.

Details of the composition of tourism regions and major changes to tourism regions can be found in *Tourist Accommodation, Small Area Data* standard data service products for each state/territory (cat. no. 8635.n.40.001) issued quarterly. Outline maps of tourism regions are also provided in these small area data products.

ANNUAL CAPACITY DATA

14 ABS releases counts of accommodation establishments and their capacity as at the end of December each year in respect of the pre-1998 scope of the survey (but recognising serviced apartments separately) as follows:

- hotels, motels and guest houses and serviced apartments with facilities and having five or more rooms;
- holiday flats, units and houses (other than those included with serviced apartments) which are operated by owners, managers or real estate agents who have sole letting rights to at least five flats, units or houses for short term letting;
- all caravan parks regardless of size; and
- all visitor hostels regardless of size.

15 As a result of classification changes applied from March quarter 1998 onward, data will not be comparable with that previously published for particular accommodation types.

16 These counts are published annually in a quarterly issue of *Tourism Indicators, Australia* (cat. no. 8634.0).

STATISTICS AVAILABLE ON REQUEST

17 The ABS makes tourist accommodation data available on request, including statistics for past quarters, for specific areas and specific data items. For example, detailed employment statistics showing the number of full-time, part-time or casual employees may be available. Normally such data are made available on a fee for service basis.

RELATED PUBLICATIONS

18 Other ABS publications and products which may be of interest include:

Directory of Tourism Statistics, 2001 cat. no. 1130.0 (irregular)

Overseas Arrivals and Departures, Australia cat. no. 3401.0 (issued monthly)

Tourism Indicators, Australia cat. no. 8634.0 (issued quarterly)

Tourist Accommodation, Small Area Data cat. no. 8635.n.40.001 standard data service (SDS) products for each state/territory (except the ACT) (issued quarterly).

19 Current publications and other products released by the ABS are listed in the *Catalogue of Publications and Products* (cat. no. 1101.0). The catalogue is available from any ABS office or the ABS web site <<http://www.abs.gov.au>>. The ABS also issues a daily release advice on the web site which details products to be released in the week ahead.

EFFECTS OF ROUNDING

20 Where figures have been rounded, discrepancies may occur between totals and the sum of the component items.

GLOSSARY

Average length of stay	Average length of stay is expressed in numbers of days and calculated by dividing <i>Guest nights</i> by <i>Guest arrivals</i> .
Bed spaces	Three-quarter beds are counted as one bed space; double beds as two bed spaces. Cots are excluded.
Capacity	Capacity in terms of <i>Guest rooms/units</i> or <i>Bed spaces</i> is the maximum number available to accommodate paying guests during the survey period. Capacity closed temporarily for seasonal reasons is included.
Establishments	The number of hotels, motels and guest houses and serviced apartments within the scope of the survey which operated for any part of the survey period, or which closed temporarily for the quarter for seasonal reasons.
Guest arrivals	The total number of paying guests counted only on the first night they stayed at the accommodation establishment during the survey period.
Guest rooms	The maximum number of rooms available at each establishment during the survey period for accommodating short-term paying guests. Units and apartments within serviced apartments are treated as rooms in these survey results.
Occupancy	Occupancy in terms of <i>Room nights</i> refers to the total number of nights each guest room or unit was occupied during the survey period. Occupancy in terms of <i>Guest nights</i> refers to the total number of paying guests counted on each night they stayed at the accommodation establishment during the survey period.
Occupancy rates	<i>Occupancy rates</i> represent occupancy expressed as a percentage of total capacity available during the survey period, e.g. for the period $\text{Room occupancy rate (\%)} = \frac{\text{Room nights occupied}}{(\text{Guest rooms}) \times (\text{No. of days in the period})} \times 100$ <p>providing that, for establishments closing (other than for seasonal reasons) or opening during the survey period, the denominator of the above expression includes only operating periods.</p>
Persons employed	The total number of persons working at each accommodation establishment at the end of the survey period (including working proprietors and those working on other than accommodation activities).
Room nights available	The number of guest rooms/units available multiplied by the number of days for which they were available during the survey period. For establishments closing (other than for seasonal reasons) or opening during this period, operating periods only are included.

Star grading The grading of hotels, motels and guest houses with facilities and serviced apartments based on the classification system used by members of the Australian Automobile Association (AAA). The gradings are allocated according to a points system based on the amenities and facilities available to guests. Details of the grading scheme are contained in the RACV-RAASA members' publication *Accommodation Australia*, or the individual tour guides produced by members of the AAA. For the purpose of classifying establishments to a star grading in this publication, 'half' star gradings are ignored (e.g. a two and a half star grading has been shown as two star).

From the September quarter 1999, some (very few) large establishments not star graded by the AAA have been allocated a star grade by the ABS for Survey of Tourist Accommodation statistical tabulation purposes.

Takings from accommodation Since 1 July 2001, takings from accommodation include gross revenue from the provision of accommodation, including GST. Takings from meals are excluded. In cases where takings from accommodation data cannot be provided inclusive of GST the amount of GST payable is estimated and the data revised accordingly.

Prior to 1 July 2001, takings from accommodation for some jurisdictions included bed taxes. From 1 July bed taxes were abolished being replaced by GST. Takings from accommodation for each month generally represent the takings received during that month. Where payments are received in advance of, or after, the provision of accommodation to guests, the monthly figure for takings from accommodation may not necessarily bear a direct relationship to the number of guests accommodated during the month.

FOR MORE INFORMATION...

- INTERNET* **www.abs.gov.au** the ABS web site is the best place to start for access to summary data from our latest publications, information about the ABS, advice about upcoming releases, our catalogue, and Australia Now—a statistical profile.
- LIBRARY* A range of ABS publications is available from public and tertiary libraries Australia-wide. Contact your nearest library to determine whether it has the ABS statistics you require, or visit our web site for a list of libraries.
- CPI INFOLINE* For current and historical Consumer Price Index data, call 1902 981 074 (call cost 77c per minute).
- DIAL-A-STATISTIC* For the latest figures for National Accounts, Balance of Payments, Labour Force, Average Weekly Earnings, Estimated Resident Population and the Consumer Price Index call 1900 986 400 (call cost 77c per minute).

INFORMATION SERVICE

Data which have been published and can be provided within five minutes are free of charge. Our information consultants can also help you to access the full range of ABS information—ABS user-pays services can be tailored to your needs, time frame and budget. Publications may be purchased. Specialists are on hand to help you with analytical or methodological advice.

- PHONE* **1300 135 070**
- EMAIL* **client.services@abs.gov.au**
- FAX* 1300 135 211
- POST* Client Services, ABS, GPO Box 796, Sydney 2001

WHY NOT SUBSCRIBE?

ABS subscription services provide regular, convenient and prompt deliveries of ABS publications and products as they are released. Email delivery of monthly and quarterly publications is available.

- PHONE* 1300 366 323
- EMAIL* subscriptions@abs.gov.au
- FAX* 03 9615 7848
- POST* Subscription Services, ABS, GPO Box 2796Y, Melbourne 3001



2863500012021
ISSN 1031-0770

RRP \$22.00